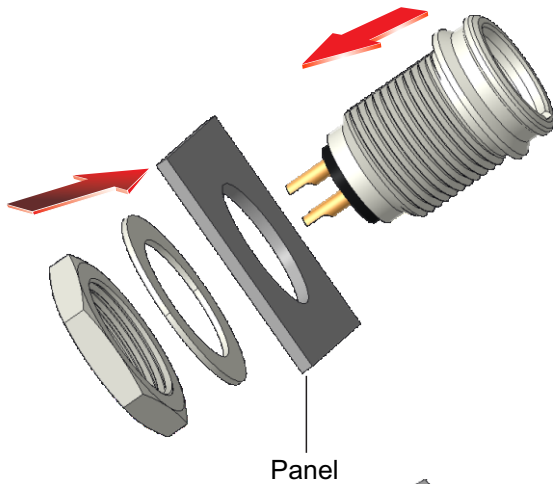




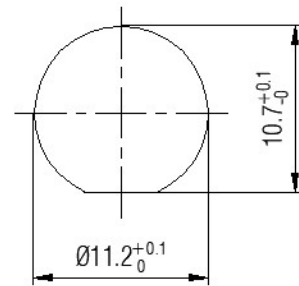
ASSEMBLY INSTRUCTION

RT*MP | Tiny XLR Chassis

A

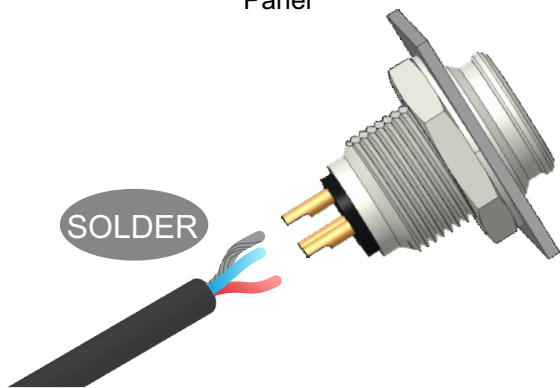


A Assemble the connector into the front of panel and put the washer and nut onto the back of panel, then tighten it.



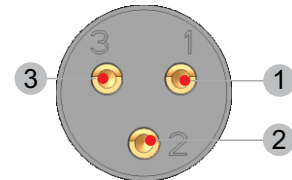
Panel cut out

B

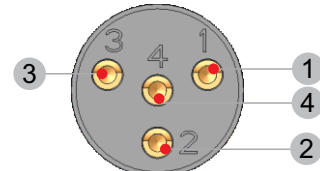


B Solder the wire.

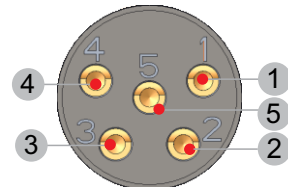
Wiring : 3pole



Wiring : 4pole



Wiring : 5pole



Male Insert

C



C Finish.

Tiny XLR Chassis:
Find more details on
www.rean-connectors.com



Neutrik AG LI T: +423 / 237 24 24 F: +423 / 232 53 93
Neutrik USA Inc. USA T: +1 704 / 972 3050 F: +1 704 / 438 9202
Neutrik UK Ltd. UK T: +44 1983 / 811 441 F: +44 1983 / 811 439
Neutrik Vertriebs GmbH DE / NL / AT/DK T: +49 8131 / 280 890 F: +49 8131 / 280 830

Neutrik France FR T: +33 1 / 4131 6750 F: +33 1 / 4131 0511
Neutrik Tokyo Ltd. JP T: +81 3 / 3663 4733 F: +81 3 / 3663 4796
Neutrik Hong Kong Ltd. HK T: +852 / 2687 6055 F: +852 / 2687 6052
Neutrik Trading Ltd. CN T: +0574 / 8825 0833 F: +0574 / 8826 5000

Draft. Nr.: NCN 018 | Update: 2021-04-18 | Data subject to change without prior notice. © 2021 REAN®. REAN® is registered trademark of Neutrik AG. ALL RIGHTS RESERVED.