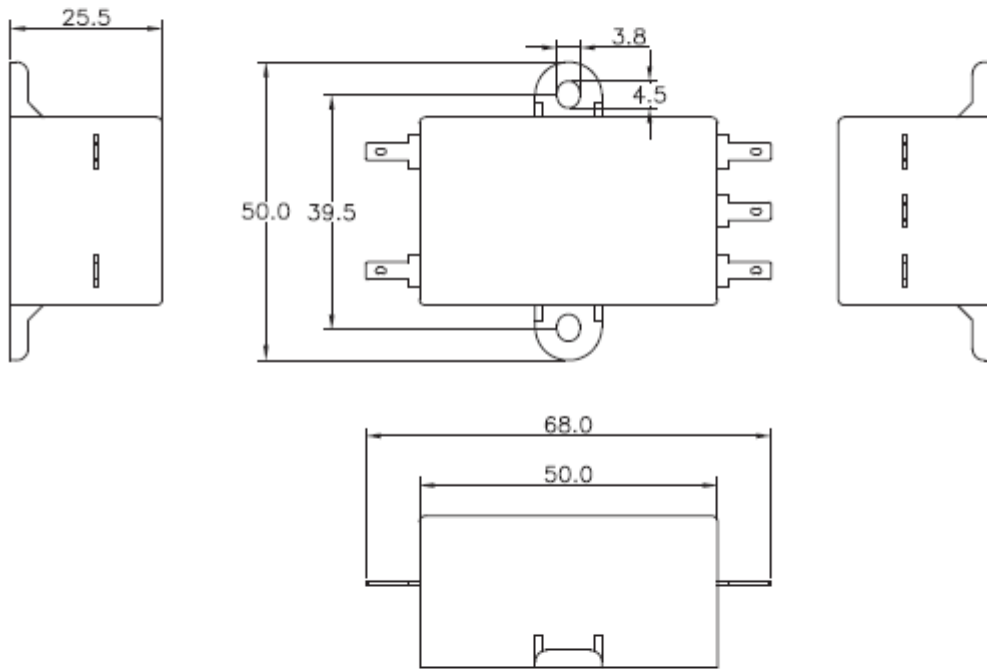


Data Sheet

Name:	EMI FILTER	Part No.:	
YBX MODEL:	YB11P5-10A-S	Customer P/N :	

1. PART NUMBER: YB11P5-10A-S

2. PHYSICAL DIMENSIONS:



0 ~ 10	±0.3
10 ~ 100	±0.5
100 ~ 150	±0.8
150 ~ 200	±1.0

Drawing by	Checked by	Approved by	Ordering No.	Unit	Rev.	Dimension Limit	Tolerance
R & D 2022.07.11 蔡萌萌	R & D 2022.07.12 喻钰鈔		YB11P5-10A-S	mm	A/0		
2022-07-11							

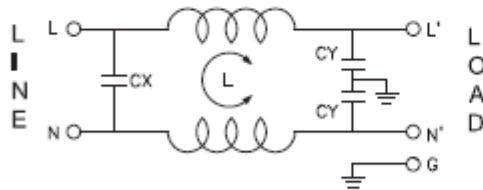
Data Sheet

Name:	EMI FILTER	Part No.:	
YBX MODEL:	YB11P5-10A-S	Customer P/N :	

3. CHARACTERISTICS:

- (1) VOLTAGE RATING.....115/250VAC
- (2) CURRENT RATING:
 - A. @ 115VAC.....10A RMS Max.
 - B. @ 250VAC.....10A RMS Max.
- (3) OPERATING FREQUENCY: 50/60Hz
- (4) LEAKAGE CURRENT: EACH LINE TO GROUND(TEMP:25°C±2°C)
 - A. @ 115VAC/60Hz.....0.4mA Max.
 - B. @ 250VAC/50Hz.....0.8mA Max.
- (5) HIPOT RATING(FOR ONE MINUTE)
 - A. LINE TO GROUND.....2250VDC
 - B. LINE TO LINE.....1450VDC
- (6) IR: 50M ohm AT 500VDC ANY INPUT OR OUTPUT TO GROUND
- (7) TEMPERATURE RANGE: -25°C~+85°C



4. ELECTRICAL SCHEMATIC:



L:2x0.3mH
Cx:0.1uF(X2)
Cy:3300pF(Y2)

5. SAFETY COMPLIANCE:

TUV : B0899310001

Drawing by	Checked by	Approved by	Ordering No.	Unit	Rev.	A/0
			YB11P5-10A-S	mm	2022-07-11	

Data Sheet

Name:	EMI FILTER	Part No.:	
YBX MODEL:	YB11P5-10A-S	Customer P/N :	

6.Label:



<i>Drawing by</i>	<i>Checked by</i>	<i>Approved by</i>	<i>Ordering No.</i>	<i>Unit</i>	<i>Rev.</i>	<i>A/0</i>
R & D 2022.07.11 蔡萌萌	R & D 2022.07.12 喻钰鈔		YB11P5-10A-S	mm	2022-07-11	