



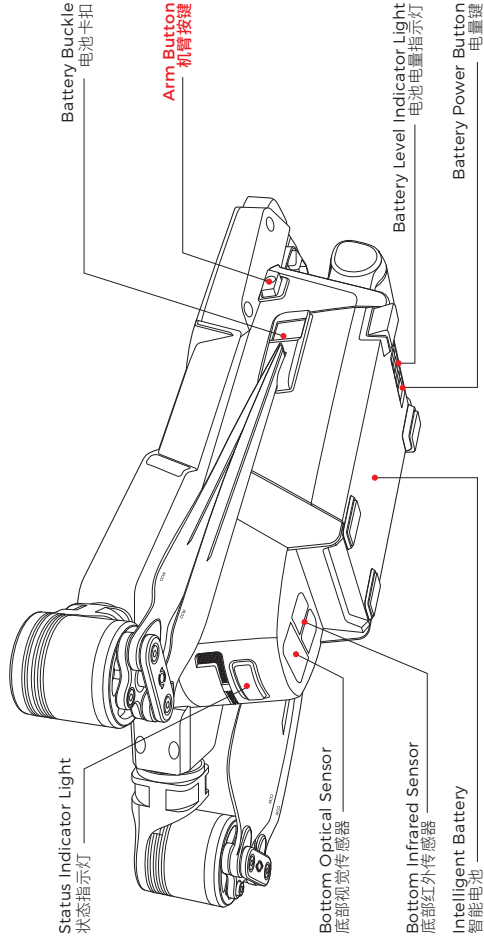
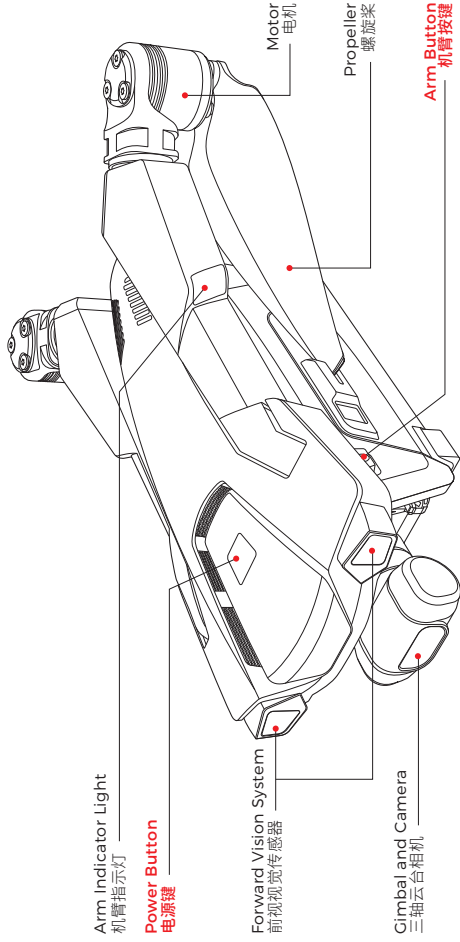
zerozero.tech

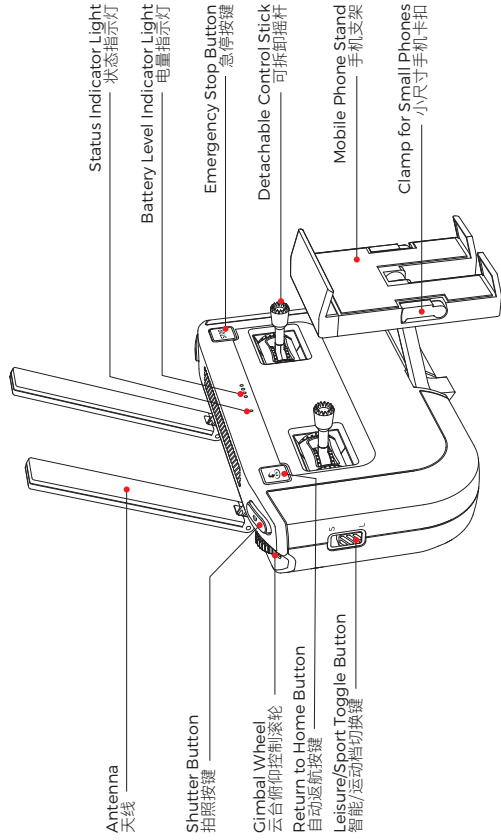
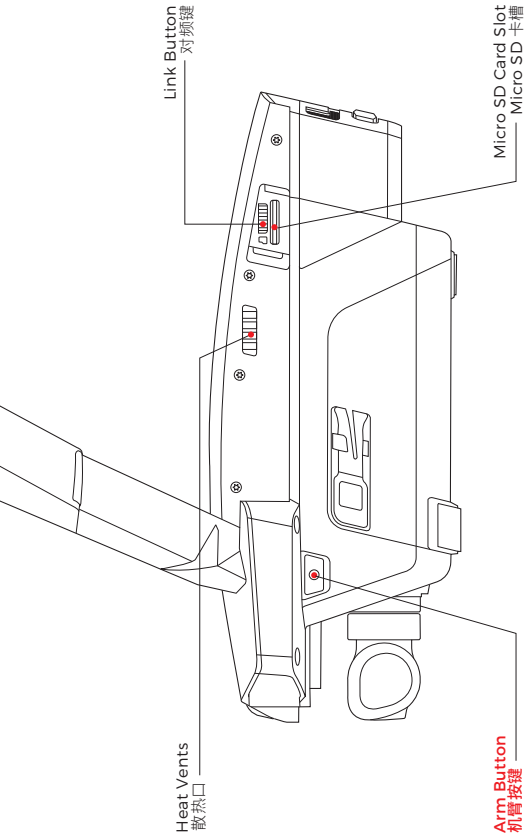
# Quick Guide

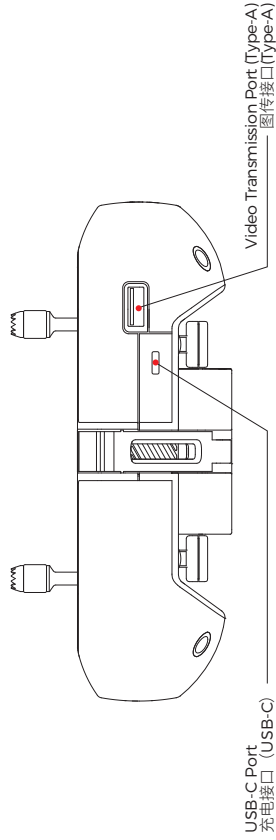
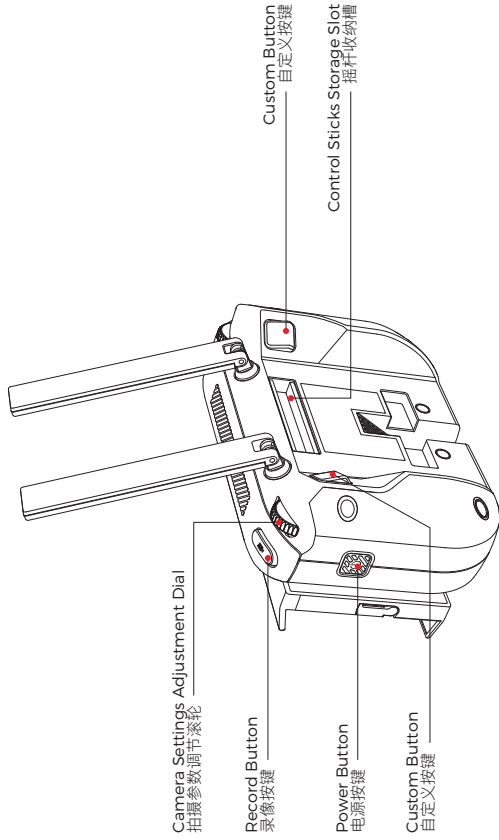
## 快速入门指南

**ZEROZERO**  
R O B O T I C S

© 2021 ZeroZeroTech - All Rights Reserved  
杭州零零科技有限公司 版权所有







• For more information, please download the User Manual from the official website.

This guide is subject to changes without prior notice. Please visit the official website for more detailed information.

• According to changes in market demand or production plan, Hangzhou Zero Zero Technology Co., Ltd. may change the product specifications and appearance. Please contact us if you have any questions.

• 了解更多信息，请前往官网下载《用户手册》。

本指南如有更新，恕不另行通知。请登录官网获取最新信息。

• 根据市场需求的变化或生产计划的调整，杭州零零科技有限公司可能对产品规格、外观进行更改，如您有任何疑问请联系我们。

## Step 1 Download V-Coptr App

- Use mobile phone to scan the QR code below or download the V-Coptr App from the App Store / Google Play Store

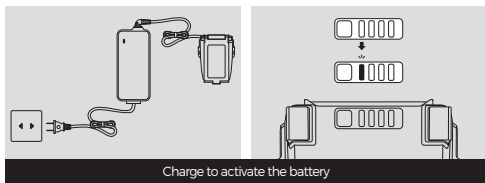
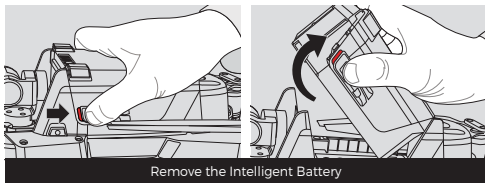
• The V-Coptr App is compatible with iOS 10.0 (or above) or Android 6.0 (or above).



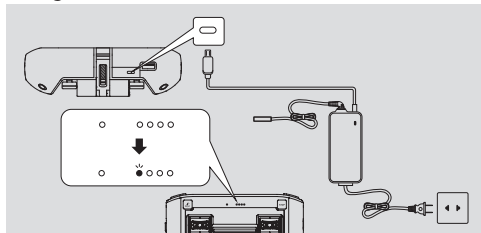
## Step 2 Charging

- Charge the Intelligent Battery

1. Push back the battery buckles to remove the battery.
2. During charging, the indicator lights of current battery level flash regularly.



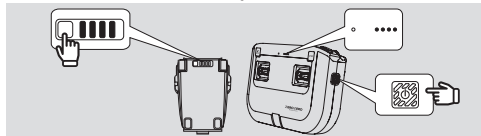
- Charge the BlastOff Controller



Plug the charging cable into the USB-C Port. It takes about 2.5 hours to fully charge.

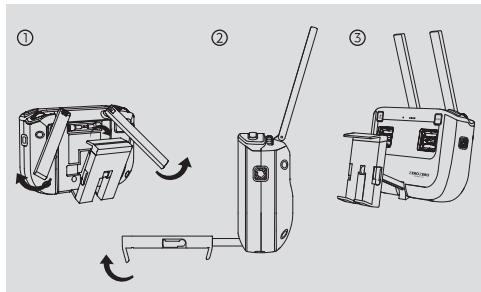
- Check the battery level

Press the power button of Intelligent Battery / BlastOff Controller briefly, and the battery level indicator will show the current battery level.

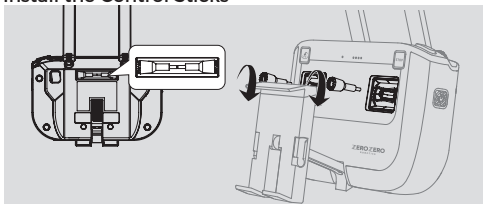


## Step 3 Prepare the BlastOff Controller

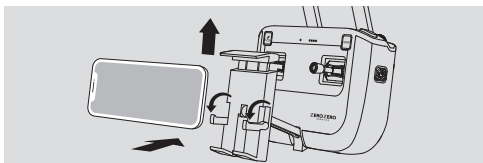
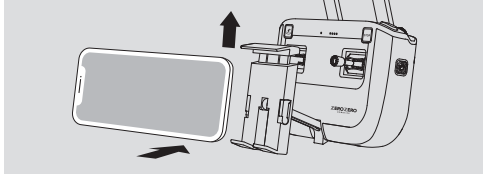
- Unfold the Mobile Phone Stand and the Antennas



- Install the Control Sticks

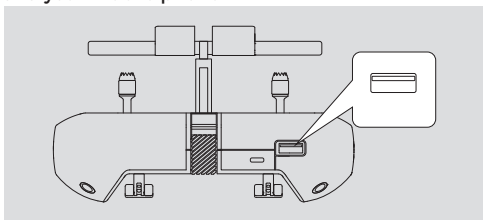


- Place your mobile phone on the Mobile Phone Stand



Use the clamps to secure smaller phones

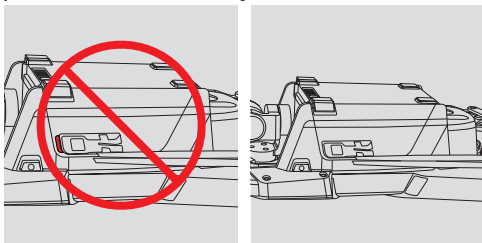
- Use the cable of your mobile phone (not included in the package) to connect the BlastOff Controller and your mobile phone



- Press and hold the power button for 2 seconds. The BlastOff Controller will beep when it is successfully turned on

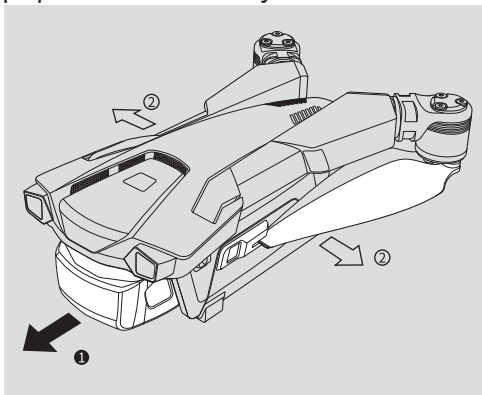
## Step 4 Prepare the Drone

- Insert the intelligent battery into the slot and push forward the battery buckles

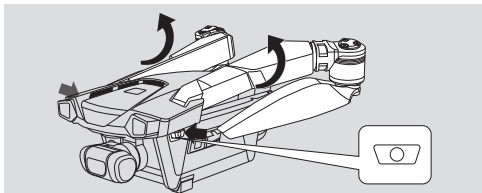


Make sure the red labels under the battery buckles are not visible to ensure the battery is securely installed

- Remove the gimbal protector and pull out the propellers from the battery buckles

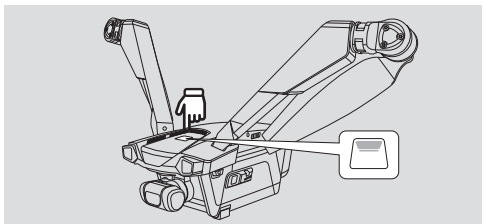


- Press and hold the arm buttons until the arms are completely unfolded



After releasing the arm buttons, the buttons are fully popped up, indicating that the arms are fully unfolded

- Press and hold the power button for 5 seconds until the status indicator light blinks. Once it's finished booting up, you will hear a sound



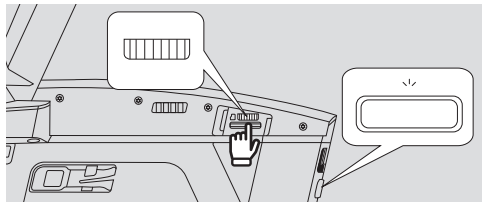
\* Note : There is no need to manually rotate the motors. The motor angle will automatically be in place before takeoff.

## Step 5 Connect the Drone

- Open the V-Copter App

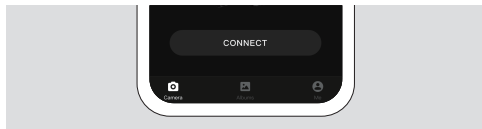


- Press the link button on the drone. The status indicator light of the drone will flash green and begin the linking process



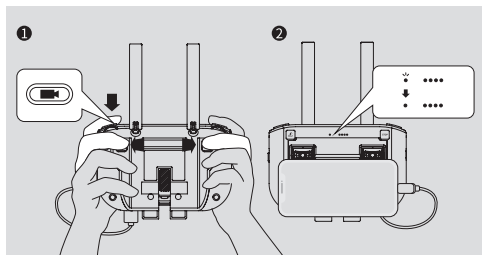
- Start Connecting

Method One: Connect BlastOff Controller and the drone via App



- Method Two: Connect the BlastOff Controller and the drone with the combination keys

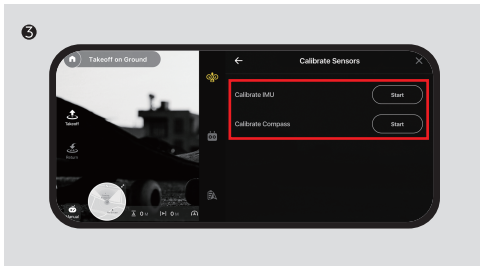
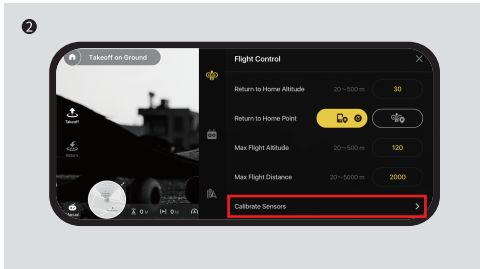
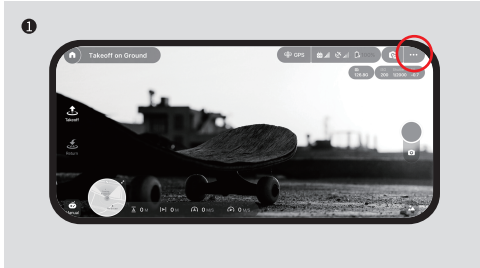
1. Press and hold the two custom buttons + record button for two seconds, the status indicator light of the BlastOff Controller will flash green as it starts to connect to the drone.
2. The connection is successful when the status indicator light of the BlastOff Controller is solid green.



\* During the connection process, please keep the BlastOff Controller and the drone within 1 meter of each other.

## Step 6 Calibrate the Sensors

- Before taking off the drone, it is recommended to calibrate the IMU and compass in the "General Settings" in the App's camera view page



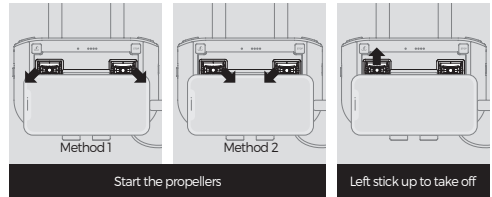
## Step 7 Flight

- Take off

1. Auto takeoff in the App.



2. Manual takeoff with the BlastOff Controller.



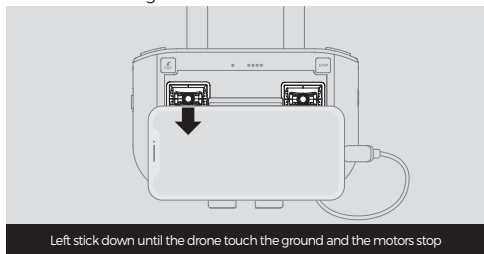
- Landing

1. Auto landing in the App.



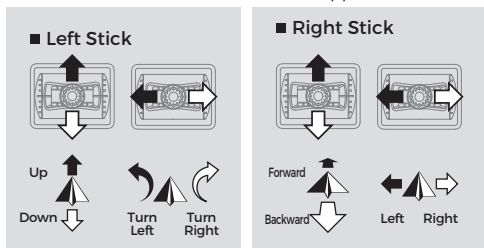


## 2. Manual landing with the BlastOff Controller.

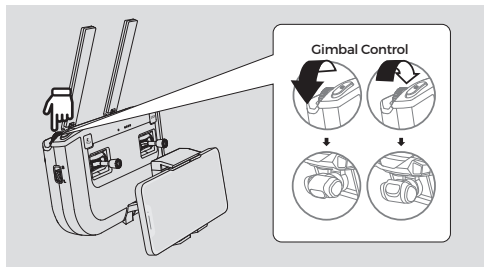


### ■ BlastOff Controller Operations

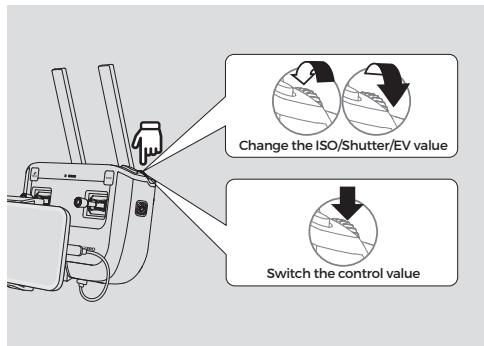
1. The default control mode is shown below. You can choose other control modes in the App.



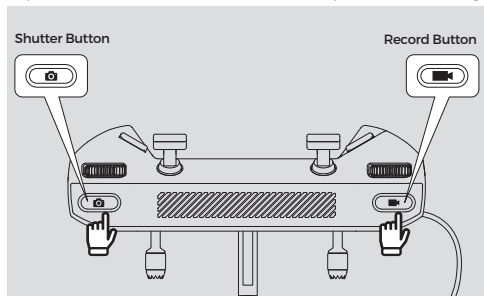
2. You can use the "gimbal wheel" to control the tilt angle of the camera.



3. You can use the "camera settings adjustment dial" to control the ISO/Shutter/EV value (short press the button to switch the control value).

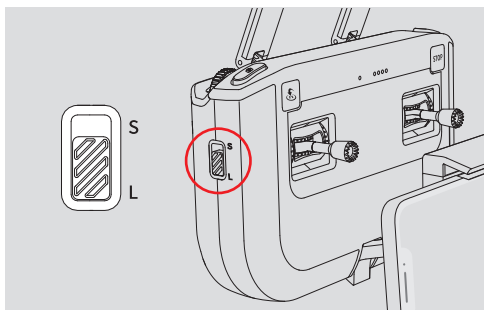


4. Short press the "shutter button" to take a photo; short press the "record button" to start/stop video recording.

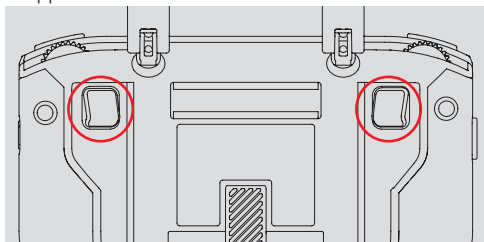


### 5. Leisure/Sport Toggle Button

- Switch to "Leisure" (L): you can use the manual, and intelligent modes in the App, and the obstacle avoidance feature is available.
- Switch to "Sport" (S): the flight speed will be greatly increased. Only the manual mode in the App can be used, and the obstacle avoidance feature is unavailable.

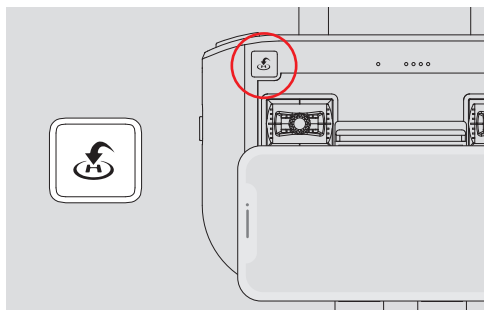


6. You can set the features of the custom buttons in the App.



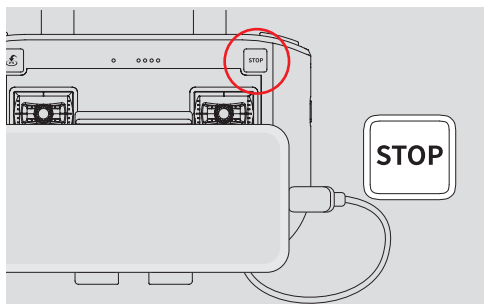
### ■ Return to Home

You can short press the "return to home button" in the App/of the BlastOff Controller to bring the drone back to the home point.



### ■ Emergency Stop

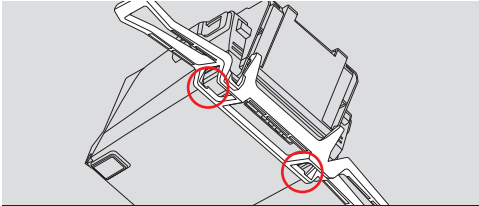
You can short press the "emergency stop button" in the App/of the BlastOff Controller to break and hover the drone in emergency situations.



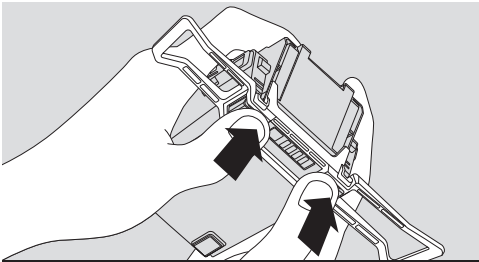
## \*Install and Remove the Landing Gear

### ■ Install the Landing Gear

( Attention: Remove the intelligent battery from the drone first. )



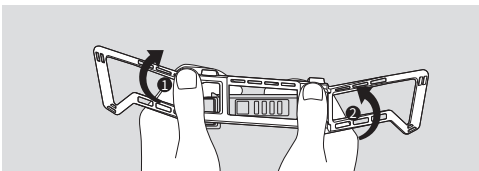
1 Wrap the landing gear over the both sides of the battery footpads



2 Push in and snap tight

### ■ Remove the Landing Gear

( Attention: Remove the intelligent battery from the drone first. )



1 Hold one side of the landing gear and push in the direction shown to remove it from the battery footpad

2 Remove the landing gear on the opposite side in the same way

## Flight Safety

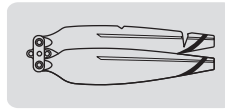
### ⚠ Attention:



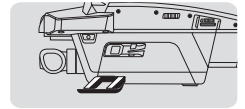
Do not release or retrieve the drone with your hands.



Please make sure the bottom infrared sensor is clean before taking off.



Replace aging, broken or deformed propellers.



\*We recommend installing the landing gear and taking off on flat ground.

### ⊘ Improper Flying Environments:



Near crowds or dense buildings



Near strong magnetic fields



No-fly zones



In rain, fog, snow, lightning, hail, storms, strong wind, or any other extreme weather environments.

Please check the Disclaimer and Safety Instructions for more details at [zerzero.tech/support/downloads](https://zerzero.tech/support/downloads). Please read it carefully before flying.

## 第一步 下载 V-Coptr App

- 使用手机扫描下方二维码或在软件商店下载安装 V-Coptr App

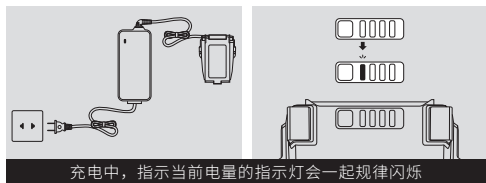
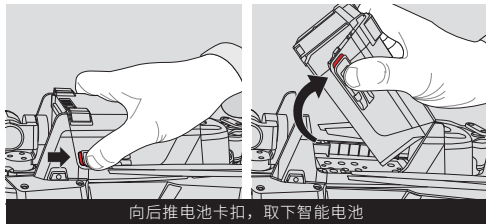
\* 请使用 iOS 10.0 及以上版本或 Android 6.0 及以上版本。



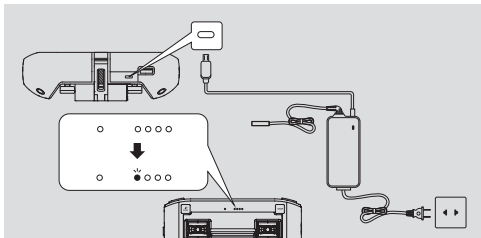
## 第二步 充电

- 给智能电池充电

首次使用智能电池，需要充电激活。



- 给遥控器充电

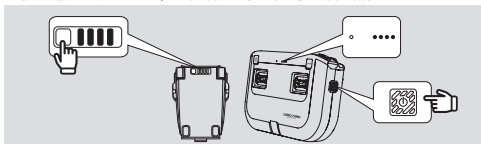


接入 USB-C 充电线

完全充满大约需要 2.5 小时

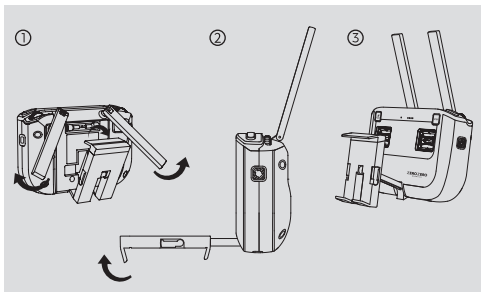
- 查看电量

短按智能电池电量键 / 遥控器电源键，可查看当前电量。

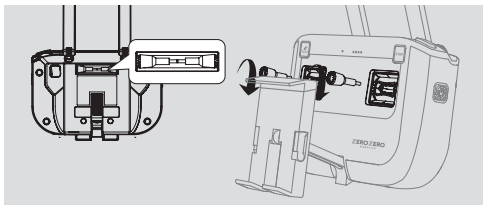


## 第三步 准备航拍遥控器

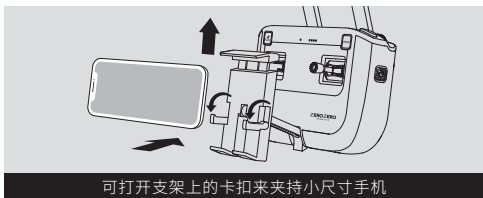
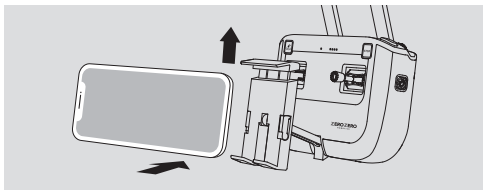
- 展开手机支架和天线



- 取出收纳槽中的摇杆并安装

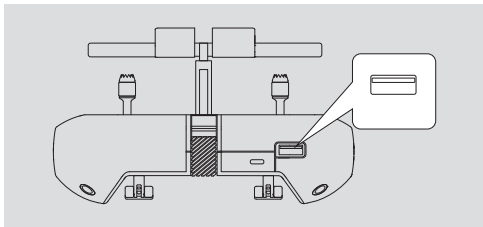


- 固定手机



可打开支架上的卡扣来夹持小尺寸手机

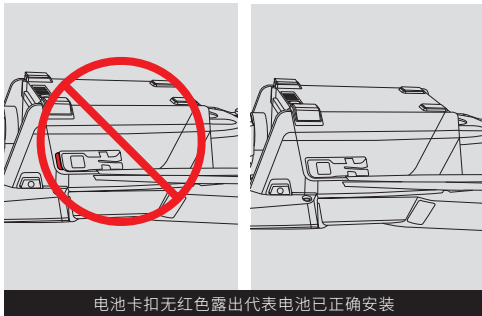
- 使用手机数据线（自备）连接



- 长按电源键 2 秒，听到开机声后，遥控器开机成功

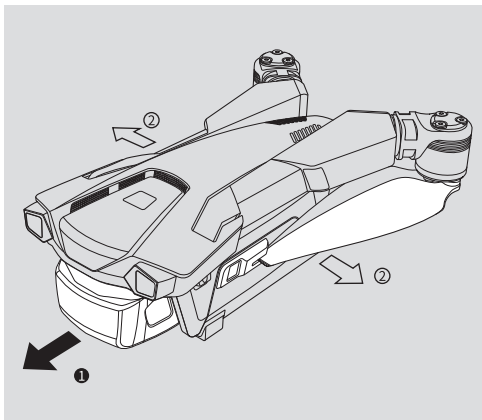
## 第四步 准备飞行器

- 将智能电池插进卡槽，并向前推电池卡扣

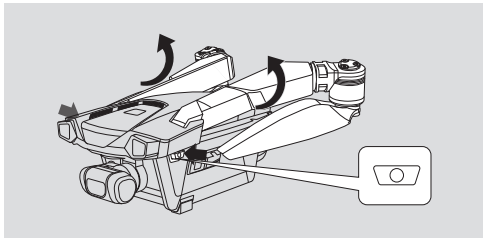


电池卡扣无红色露出代表电池已正确安装

- 摘下云台保护罩，从电池卡扣中抽出桨叶

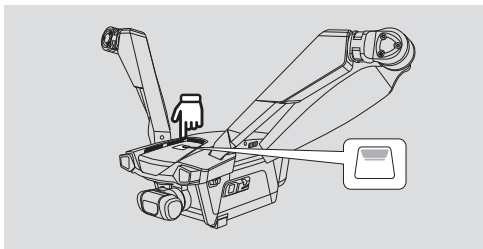


- 按住机臂按键，直至完全展开机臂



松开按键后，机臂按键完全弹起代表机臂已展开到位

- 长按电源键 5 秒至状态指示灯开始闪烁，等待开机声响起，开机成功



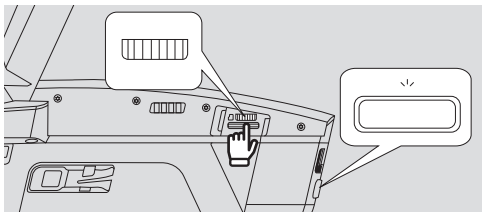
\* 注意：不需要手动旋转电机，起飞前电机角度将自动就位。

## 第五步 连接飞行器

- 打开 V-Coptr App



- 短按飞行器对频键，飞行器状态指示灯绿灯闪烁并开始对频

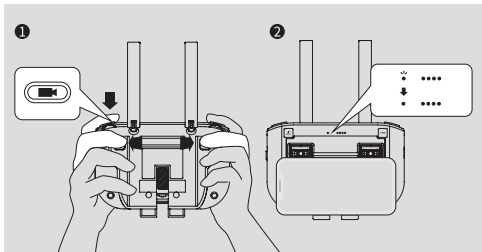


- 方法一：通过 App 连接航拍遥控器和飞行器



- 方法二：通过组合键连接航拍遥控器和飞行器

1. 长按组合键（两个自定义按键+录像按键）两秒，遥控器状态指示灯绿灯闪烁，开始连接飞行器。
2. 连接成功，遥控器状态指示灯绿灯常亮。



\* 连接过程中，请保持航拍遥控器与飞行器相距 1 米以内。

## 第六步 校准传感器

- 起飞飞机前，建议在 App 预览流页内的“通用设置”中校准 IMU 和指南针



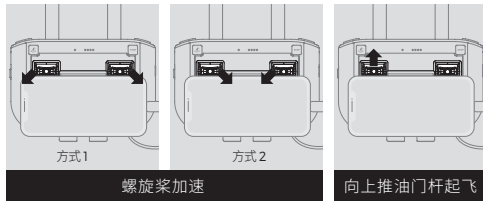
## 第七步 飞行操控

- 起飞

1. 使用 App 一键起飞。



2. 使用 航拍遥控器 手动起飞。

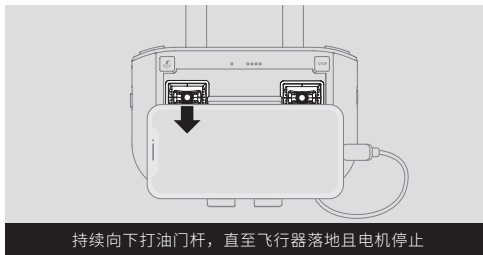


- 降落

1. 使用 App 一键降落。

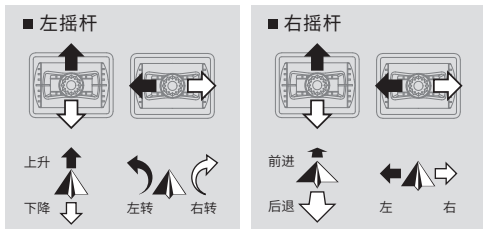


2. 使用“航拍遥控器”手动降落。

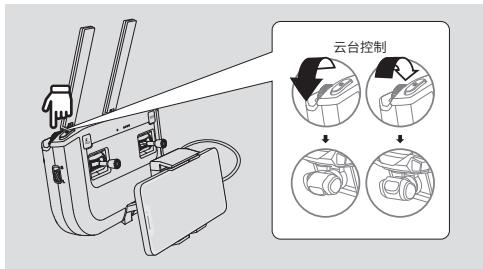


## ■ 航拍遥控器操作

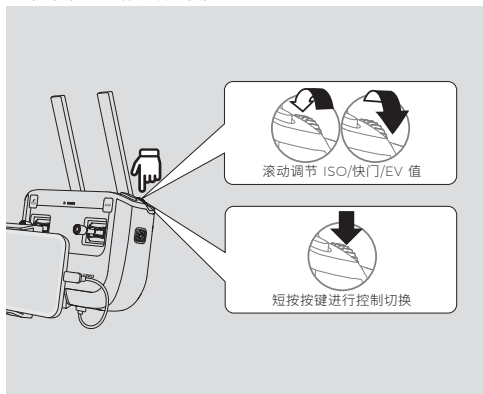
1. 遥控器默认操控方式为“美国手”，您可以在 App 中选择其他操控方式。



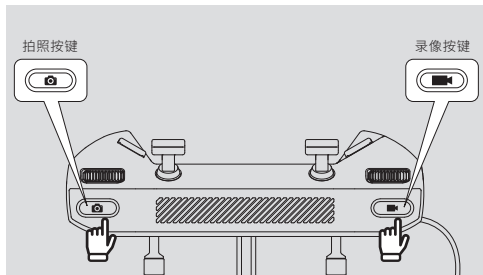
2. “云台俯仰控制滚轮”，可控制相机的俯仰拍摄角度。



3. “拍摄参数调节滚轮”，可滚动调节 ISO/快门/EV 值（短按按键进行控制切换）。



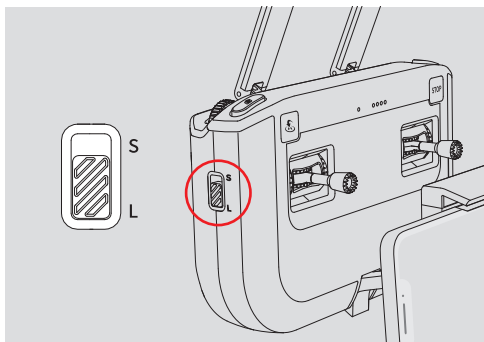
4. 单击“拍照按键”，拍摄一张照片；单击“录像按键”，开始/停止录像。



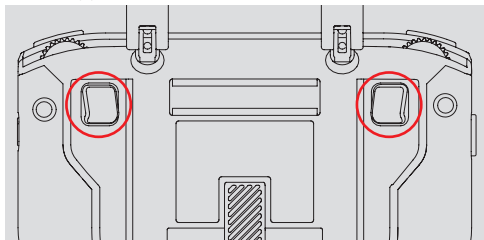
5. 智能/运动档切换键

- 切换至“智能档” (L): 可使用 App 上的手动和智能模式，以及避障功能。
- 切换至“运动档” (S): 飞行速度将大幅提升，仅可使用 App 上的手动模式，且无避障功能。



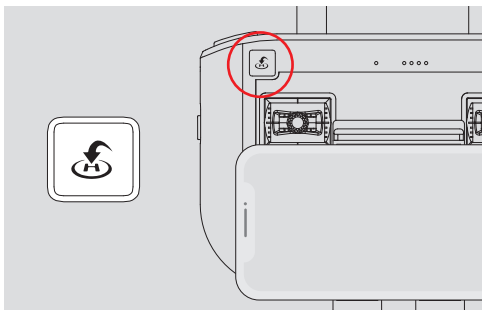


6. 可在 App 中设置“自定义按键”的功能。



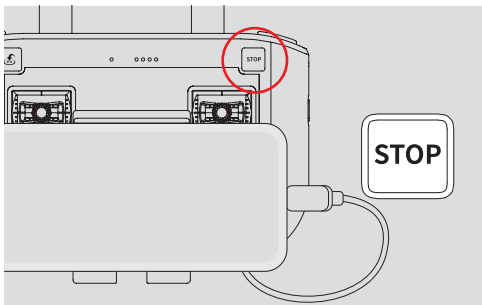
### ■ 自动返航

短按 App / 航拍遥控器上的“自动返航按键”，飞机自动返航。



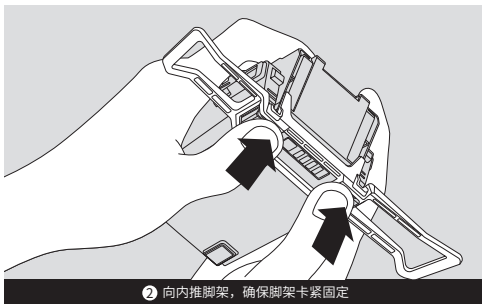
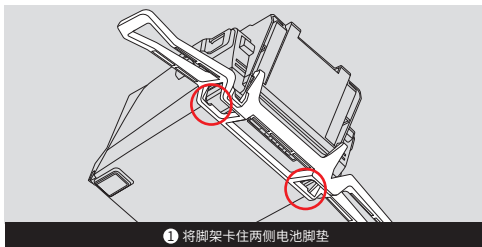
### ■ 急停

飞行过程中遇到需要紧急刹车的情况，请短按 App / 航拍遥控器上的“急停按键”使飞行器刹车并悬停。

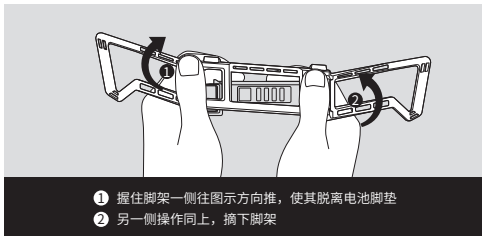


## \*脚架安装与拆卸

### ■ 安装脚架（注意：需要先将电池从飞机上取下）



### ■ 拆卸脚架（注意：需要先将电池从飞机上取下）



## 飞行安全

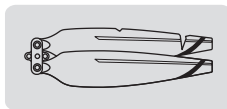
### ⚠ 注意事项：



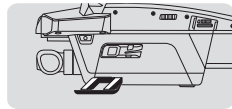
请勿手持放飞或收回飞机。



起飞前，请确保底部红外传感器清洁无脏污。



及时更换老化、破损或变形的螺旋桨。



• 建议安装脚架并选择平地降落飞机。

### ⊘ 不适用飞行环境：



人群、建筑密集的区域



强磁场环境



禁止飞行的区域或建筑物周围



雨雪、雾霾、雷电、大风、冰雹、沙尘等恶劣天气环境

更多安全事项请参考

[zerozero.tech/support/support/downloads](http://zerozero.tech/support/support/downloads) 上的免责声明和安全操作手册，飞行前请务必仔细阅读。