

---

## DC 2V-24V To 5V-28V 2A Step Up Boost Converter Module



### 1. Module features (boost module):

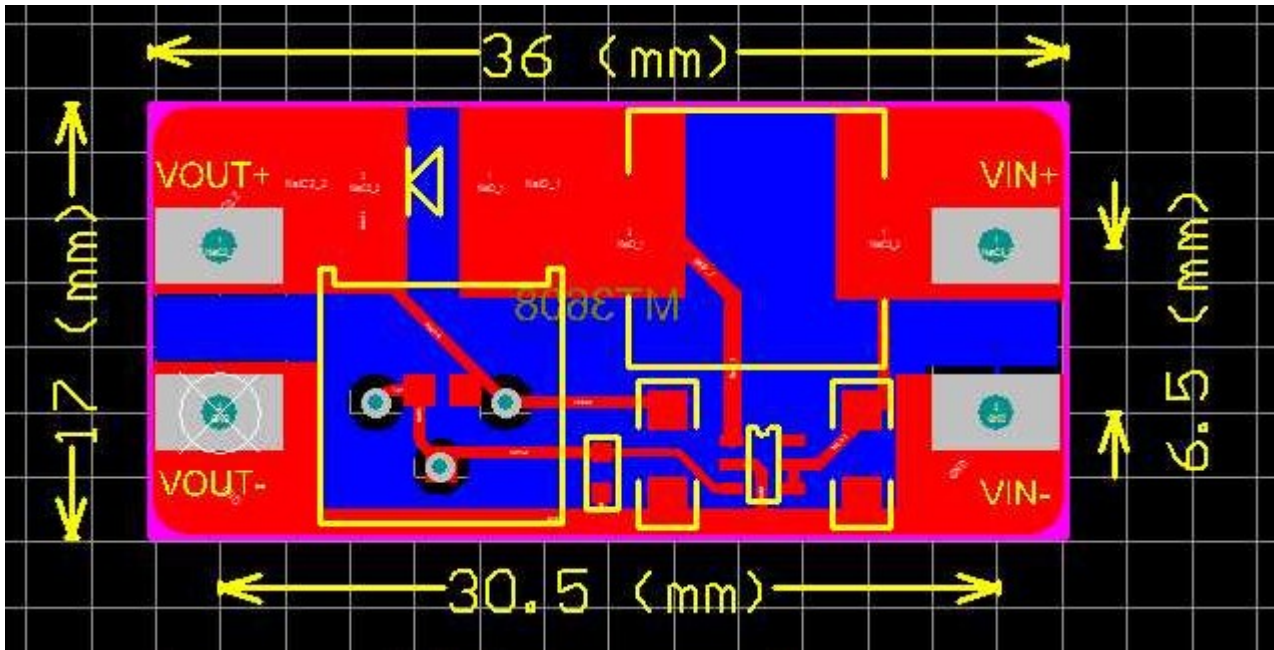
- 1) Maximum output current: 2A
- 2) Input voltage: 2v ~ 24v
- 3) Maximum output voltage:> 5V-28v
- 4) Efficiency:> 93%

### 2. Mechanical Performance

- 1) Size:36mm\* 17mm\* 14mm

### 3. Precautions

- 1) The input voltage should not exceed the maximum input voltage
- 2) Peak current output does not exceed 2A



### Adjust Voltage

Rotate the potentiometer anticlockwise, the voltage will rise.

The voltage this module output can't be changed, which is equal to the input voltage.

Rotate the potentiometer anticlockwise for 10 circles if you have some problems.

Then the voltage can be adjusted using this module.