

LED Under Cabinet Luminaire – UNTA Instruction Manual

MEGATRON®

TECHNICAL SPECIFICATION

Model Number	MT70130-2	MT70131-2	MT70132 White+RGB*
Color	White	Silver	Silver
System Wattage	5,7W	5,7W	5,7W
Chip Wattage	4W	4W	4W
Light source energy efficiency class <x>	E	E	E
Lumen Containg Product	440lm	440lm	440lm
Lumen Light Source	480lm	480lm	480lm
Voltage	220-240V~	220-240V~	220-240V~
Frequency	50Hz	50Hz	50Hz
Color Temperature	3000°K	3000°K	3000°K
CRI	Ra80	Ra80	Ra80
Lifetime	30.000h	30.000h	30.000h
On/Off	>40.000x	>40.000x	>40.000x
IP Rating	IP20	IP20	IP20
Dimmable	No	No	No

*White+RGB means, that the warm white light (W) of the luminaire is produced by separate LEDs on their own. This technology enables a high light quality standard for floodlight illumination. The red, green & blue LEDs (RGB) are responsible exclusively for the color effects of the cabinet luminaire.

CAUTIONS:

- Read the entire manual carefully before installation and operation.
- Installation or replacement should be performed only by licensed and qualified electricians.
- DO NOT disassemble the inner part of the luminaire. Doing so may result in luminaire damage or malfunction.
- Switch OFF the power source before installation, replacement and cleaning. ⚠
- Wearing gloves during installation is recommended to ensure the luminaire is kept in the best condition.
- Before replacement of the luminaire, turn it off and allow it to cool down. Heat-resistant gloves are mandatory when handling the luminaire.
- Do not operate the luminaire if the external flexible cable or cord is damaged. The replacement of the luminaire should be handled by a licensed and qualified electrician for safety purpose.
- The minimum safety distance from the illuminated object is 0,1m. ⚡
- The luminaire is non-dimmable. Do not use in dimmer circuits!
- The manufacturer accepts no liability for any damage resulting from the misuse of the luminaire or from when is it used with inappropriate equipment.
- The light source of this luminaire is not replaceable; when the light source reaches its end of life the whole luminaire shall be replaced.
- This product contains a light source of energy efficiency class <F>
- Consult your dealer if you have any enquiries.

ATTENTION:

- Instant start is allowed.
- Designed only for indoor applications.
- The operating temperature of the luminaire is -20°C to +40°C.

INSTALLATION:

1. Mounting information:

- This luminaire is a class II luminaire and can only be used with 220-240V, 50Hz power supply.
- Up to max. 10 luminaires can be connected together, if needed.
- A distance of min. 60cm has to be maintained between the luminaire and the water supply and/or the sink.
- Do not mount the luminaire over the cooking plate/area.
- Keep steam, dripping water and other liquids away from the luminaire.
- Make sure that there are no shiny surfaces in the detection range of the sensor, to avoid malfunction.

Correct disposal of this product:

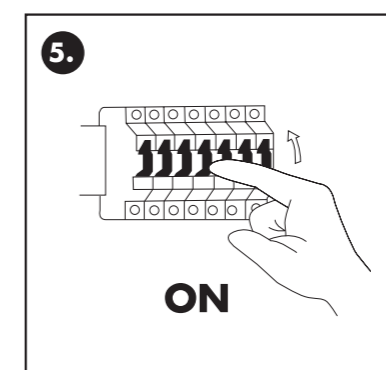
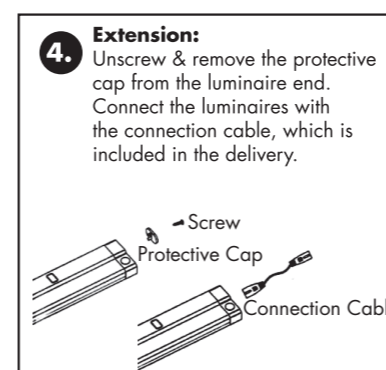
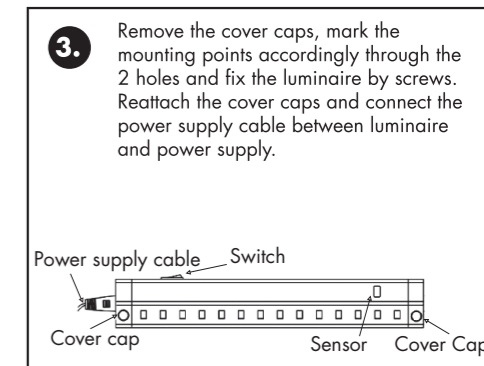
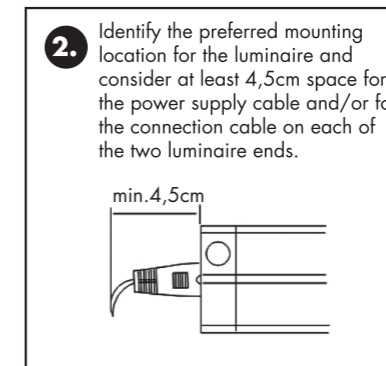
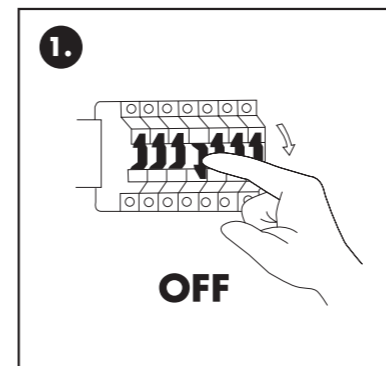
This marking indicates that this product should not be disposed with other household wastes throughout the EU. To prevent possible harm to the environment or human health from uncontrolled waste disposal, recycle it responsibly, to promote the sustainable reuse of material resources. To return your device, please use the return and collection systems, or contact the retailer where the product was purchased. They can take this product for environmental safe recycling.



LED Under Cabinet Luminaire – UNTA Instruction Manual

MEGATRON®

2. Mounting:

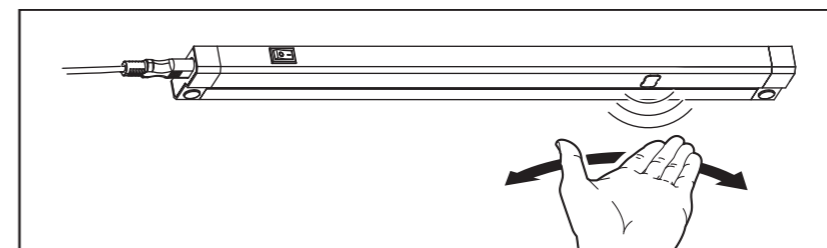


Sensor Function:

1. Turn ON the LED under cabinet luminaire using the toggle switch.
2. By a short movement of max. 5cm below the motion sensor you switch the luminaire on or off again.

MT70132 Color change via sensor function:

1. By holding your hand under the motion sensor for a long time, you switch the LED under cabinet Luminaire through the 8 light colors.
2. To keep the selected light color, remove your hand from the detection area of the motion sensor.



Correct disposal of this product:

This marking indicates that this product should not be disposed with other household wastes throughout the EU. To prevent possible harm to the environment or human health from uncontrolled waste disposal, recycle it responsibly, to promote the sustainable reuse of material resources. To return your device, please use the return and collection systems, or contact the retailer where the product was purchased. They can take this product for environmental safe recycling.

