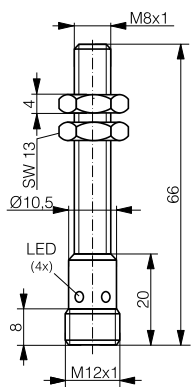
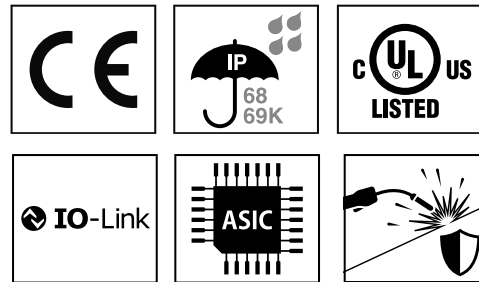
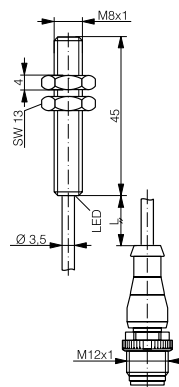


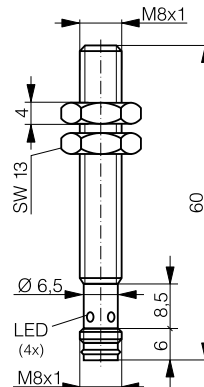
HOUSING	OPERATING DISTANCE	MOUNTING	✓ Anti-spatter coating ✓ Magnetic-field immunity: medium frequency ≤ 15 kA 50 Hz fields ≤ 40 mT	✓ Robust full-metal sensor, impact resistant ✓ Long operating distance ✓ Factor 1 on Fe and Al
<b>M8</b>	<b>3 mm</b>	<b>Embeddable</b>		



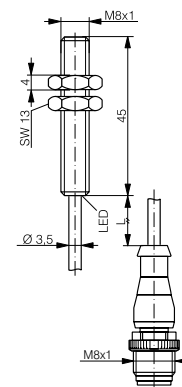
DW-AS-70x-M8-6xx



DW-AV-70x-M8-6xx



DW-AS-70x-M8-6x3



DW-AV-703-M8-692

DETECTION DATA		INTERFACE	
Rated operating distance ( $S_n$ )	3 mm	Indicator LED, yellow	Sensing state ( $0 \leq s \leq S_n$ )
Assured operating distance ( $S_a$ )	$\leq (0.81 \times S_n)$ mm	IO-Link	✓
Repeat accuracy	$\leq 0.15$ mm	MTTF (@40°C)	1017 y
Hysteresis	$3\% S_r \leq \text{Hyst} \leq 15\% S_r$		
Temperature drift	$\leq 10\% S_r$		
Standard target	9 x 9 x 1 mm <sup>3</sup> , FE360		

Note:  $0.9S_n \leq S_a \leq 1.1S_n$ .

ELECTRICAL DATA		MECHANICAL DATA	
Supply voltage range ( $U_B$ )	10...30 VDC	Mounting	Embeddable
Residual ripple	$\leq 20\% U_B$	Housing material	V2A / 1.4305 / AISI 303 (+ coating)
Output current	$\leq 200$ mA	Sensing face material	V2A / 1.4305 / AISI 303 (+ coating)
Output voltage drop	$\leq 2.0$ VDC	Max tightening torque	8 Nm
Power consumption (no-load)	$\leq 10$ mA	Ambient operating temperature	-25...+85°C <sup>1</sup>
Residual current	$\leq 0.1$ mA	Enclosure rating	IP68 / IP69K
Switching frequency	$\leq 15$ Hz	Weight (cable/connector)	see page 2
Short-circuit protection	✓	Shock and vibration	IEC 60947-5-2
Voltage reversal protection	✓		
Cable length max.	$\leq 300$ m		

<sup>1</sup>Maximum temperature according to UL: 70°C.

Note: all data measured according to IEC 60947-5-2 standard with  $U_B=20 \dots 30$ VDC,  $T_A=23^\circ\text{C} \pm 5^\circ\text{C}$ .

## CORRECTION FACTORS FOR TARGET OF

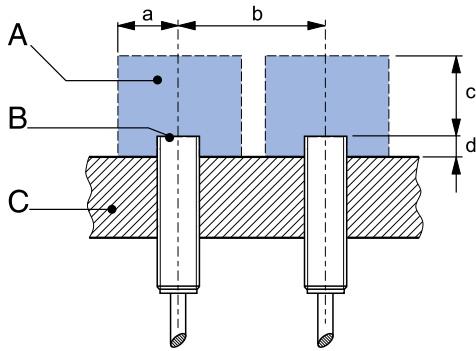
Steel FE 360	1	Copper	1	Aluminum	1	Brass	1.3	Stainless Steel V2A 1/2 mm	0.4 / 0.7
--------------	---	--------	---	----------	---	-------	-----	----------------------------	-----------

## CORRECTION FACTORS FOR EMBEDDABLE MOUNTING IN SUPPORT OF

Steel FE 360	0.9	Aluminum	0.9	Brass	0.75	Stainless Steel V2A	0.8
--------------	-----	----------	-----	-------	------	---------------------	-----

Note: the operating distance of the sensor must be multiplied by the correction factor of the material. For example, the operating distance on Aluminum is  $S_{n,Al} = S_n \times CF_{Al}$ . In case of embeddable mounting, the distance is multiplied by the additional correction factor of the support, thus  $S_{n,Al} = S_n \times CF_{Al} \times CF_{emb,Al}$ .

## INSTALLATION CONDITIONS



A : metal free zone  
 B : sensing face  
 C : support  
 a : 6mm  
 b : 22mm  
 c : 9mm  
 d : steel 0mm

Note: additional installation information can be found in the glossary of the Contrinex General Catalog.

## IO-LINK FUNCTIONALITIES

IO-Link version	1.1
SIO mode	Supported
Process data	7-bit input
Baudrate	COM2 (38.4 kBaud)
Minimum cycle time	10.4 ms
ISDU	Not supported



IO-Link files may be downloaded from

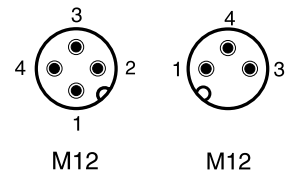
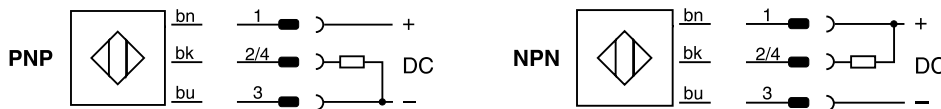
[www.contrinex.com/product-range/inductive-sensors/](http://www.contrinex.com/product-range/inductive-sensors/).

Select the product name to display the product page with corresponding downloads.

Alternatively, just click/scan the QR code on the left.

## WIRING DIAGRAM

## PIN ASSIGNMENT



## AVAILABLE TYPES

### UNCOATED

Part number	Part reference	Polarity	Connection	Output on pin 2	Output on pin 4 / bk	Weight
330-320-159	DW-AS-703-M8-694	PNP	M12 4-pin	-	Normally open (NO) / IO-Link	17 g
320-420-777	DW-AV-701-M8-695	NPN	PUR, 0.2 m + M12 3-pin	-	Normally open (NO)	23 g
330-320-154	DW-AV-703-M8-695	PNP	PUR, 0.2 m + M12 3-pin	-	Normally open (NO) / IO-Link	23 g
330-320-147	DW-AS-703-M8-673	PNP	M8 3-pin	-	Normally open (NO) / IO-Link	15 g
330-320-188	DW-AV-703-M8-692	PNP	PUR, 0.2 m + M8 3-pin	-	Normally open (NO) / IO-Link	23 g

### COATED

Part number	Part reference	Polarity	Connection	Output on pin 2	Output on pin 4 / bk	Weight
330-320-160	DW-AS-703-M8-697	PNP	M12 4-pin	-	Normally open (NO) / IO-Link	17 g
320-420-778	DW-AV-701-M8-696	NPN	PUR, 0.2 m + M12 3-pin	-	Normally open (NO)	23 g
330-320-164	DW-AV-703-M8-696	PNP	PUR, 0.2 m + M12 3-pin	-	Normally open (NO) / IO-Link	23 g
330-320-180	DW-AS-703-M8-693	PNP	M8 3-pin	-	Normally open (NO) / IO-Link	15 g

Note: part reference may include additional suffix to indicate a revision version or special version. Further information is available on request.

Operators of the products we supply are responsible for compliance with measures for the protection of persons. The use of our equipment in applications where the safety of persons might be at risk is only authorized if the operator observes and implements separate, appropriate and necessary measures for the protection of persons and machines. Terms of delivery and rights to change design reserved.