

Item no.: 2886731

## Data Sheet

---

Shaft coupling 8 x 30mm - 4 mm shaft, Outer diameter : 20 mm



### Technical data

Bore  $\varnothing$ : 8.0 mm, 4.0 mm

Dim ( $\varnothing$  x L): 20 mm x 30 mm

( $\varnothing$ ): 20 mm

Length: 30 mm

Rated Torque (TKN) : 5 N.m.

Max. Torque (TK Max.) : 10 N.m.

Screw type : M3

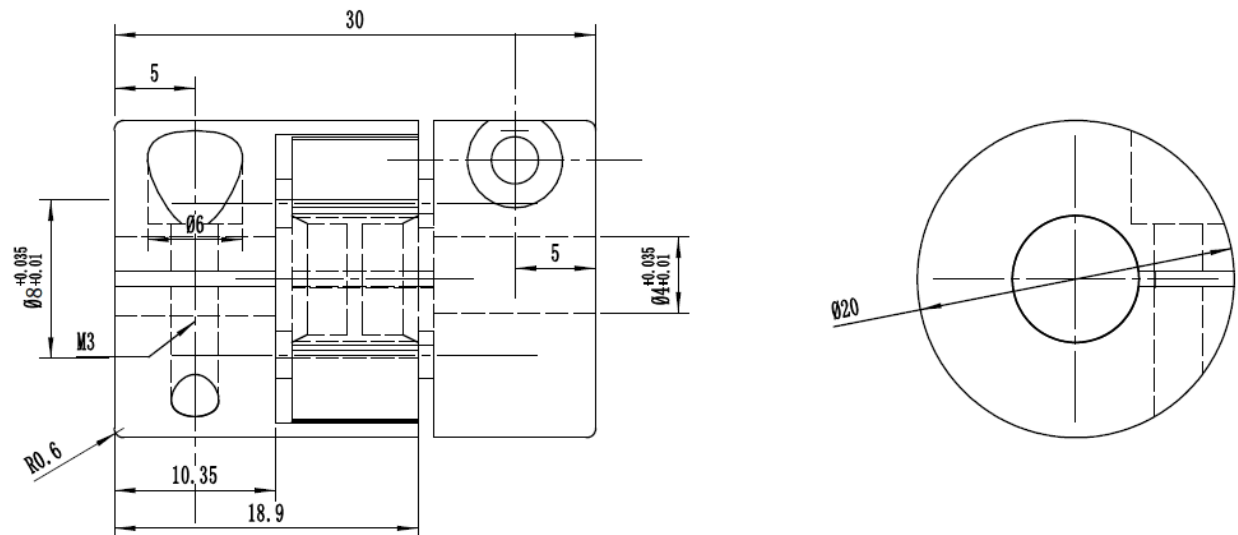
Material: Aluminum alloy, Polyurethane

Product type: Backlash free elastomer coupling

Item no.: 2886731

## Data Sheet

---



Abmessungen in mm