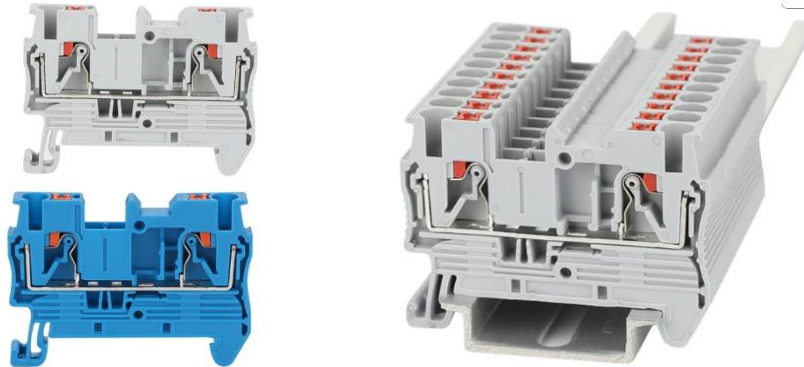



Data Sheet

Push-in DIN Rail Terminal Blocks

powered
by **WKDC**®



Item No.	Color	Rated Voltage	Nominal Current	Cross section solid / soft mm ²	Product dimensions (L x H x W mm)
2898084	Grey	800 V	31 A	02 - 4 / 0.2 - 2.5	48.5 x 35.5 x 5.2
2898085	Blue	800 V	31 A	02 - 4 / 0.2 - 2.5	48.5 x 35.5 x 5.2
2898086	Grey	800 V	41 A	0.2 - 6 / 0.2 - 4	56 x 36.5 x 6.2
2898087	Blue	800 V	41 A	0.2 - 6 / 0.2 - 4	56 x 36.5 x 6.2
2898088	Grey	1000 V	52 A	0.5 - 10 / 0.5 - 6	57.7 x 43.5 x 8.2
2898089	Blue	1000 V	52 A	0.5 - 10 / 0.5 - 6	57.7 x 43.5 x 8.2
2898090	Grey	1000 V	70 A	0.5 - 16 / 0.5 - 10	67.7 x 49.5 x 10.2
2898091	Blue	1000 V	70 A	0.5 - 16 / 0.5 - 10	67.7 x 49.5 x 10.2

- Circuit diagram: 
- Material: Nylon PA66, Tin plated brass conductor
- Flammability rating: V0
- Mounting type: DIN Rail NS 35
- Standard: IEC 60947-7-1

English:

Danger - hazardous voltage - will cause electric shock, serious injuries or death. Installation and maintenance work on this product may only be carried out by an authorized electrician. Disconnect the electrical system and the product from the power supply before starting work.

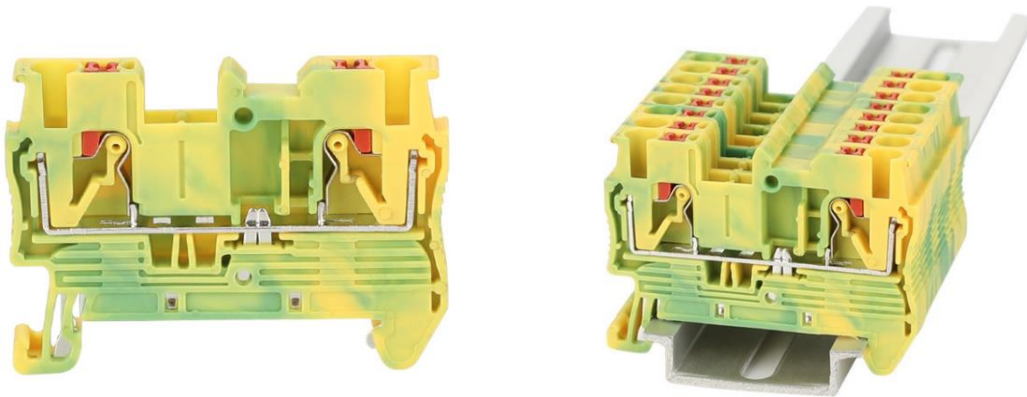
German:

Achtung, gefährliche Spannung - kann zu elektrischem Schlag, Verletzungen oder Tod führen. Installations- und Wartungsarbeiten an diesem Produkt dürfen nur durch eine autorisierte Elektrofachkraft durchgeführt werden. Vor Beginn der Arbeiten elektrische Anlage und das Produkt spannungsfrei schalten.

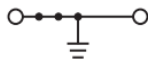
Data Sheet

Push-in Ground DIN Rail Terminal Blocks

powered
by **WKDC**



Item No.	Rated Voltage	Nominal Current	Cross section solid / soft mm ²	Product dimensions (L x H x W mm)	Suitable for (Item No.)
2898092	800 V	31 A	02 - 4 / 0.2 - 2.5	48.5 x 35.5 x 5.2	2898084
					2898085
2898093	800 V	41 A	0.2 - 6 / 0.2 - 4	56 x 36.5 x 6.2	2898086
					2898087
2898094	1000 V	52 A	0.5 - 10 / 0.5 - 6	57.7 x 43.5 x 8.2	2898088
					2898089
2898095	1000 V	70 A	0.5 - 16 / 0.5 - 10	67.7 x 49.5 x 10.2	2898090
					2898091



- Circuit Diagram:
- Material: Nylon PA66, Tin plated brass conductor
- Flammability rating: V0
- Mounting type: DIN Rail NS 35
- Standard: IEC 60947-7-1

English:

Danger - hazardous voltage - will cause electric shock, serious injuries or death. Installation and maintenance work on this product may only be carried out by an authorized electrician. Disconnect the electrical system and the product from the power supply before starting work.

German:

Achtung, gefährliche Spannung - kann zu elektrischem Schlag, Verletzungen oder Tod führen. Installations- und Wartungsarbeiten an diesem Produkt dürfen nur durch eine autorisierte Elektrofachkraft durchgeführt werden. Vor Beginn der Arbeiten elektrische Anlage und das Produkt spannungsfrei schalten.

Data Sheet

End Cover

powered
by **WKDC**



Item No.	Product dimensions (L x H x W mm)	Suitable for (Item No.)
2898096	49.2 x 30 x 2.2	2898084, 2898085, 2898092
2898097	56.5 x 30 x 2.2	2898086, 2898087, 2898093
2898098	57.7 x 36 x 2.2	2898088, 2898089, 2898094
2898099	67.7 x 42.6 x 2.2	2898090, 2898091, 2898095

- Material: Nylon PA66
- Flammability rating: V0

Plug-in Bridge



Item No.	Product dimensions (L x H x W mm)	Suitable for (Item No.)
2898100	11 x 22.8 x 3.1	2898084, 2898085, 2898112, 2898113
2898101	20.6 x 22.8 x 3.1	2898084, 2898085, 2898112, 2898113
2898102	11 x 22.8 x 3.1	2898086, 2898087, 2898114, 2898115
2898103	23.3 x 22.8 x 3.1	2898086, 2898087, 2898114, 2898115
2898104	14.8 x 30.8 x 3.3	2898088, 2898089, 2898116, 2898117
2898105	31.2 x 30.8 x 3.3	2898088, 2898089, 2898116, 2898117
2898106	18 x 35.1 x 4.2	2898090, 2898091

- Material: Nylon PA66, Nickel plated brass

Item no.: 2898084 - 2898111

Data Sheet

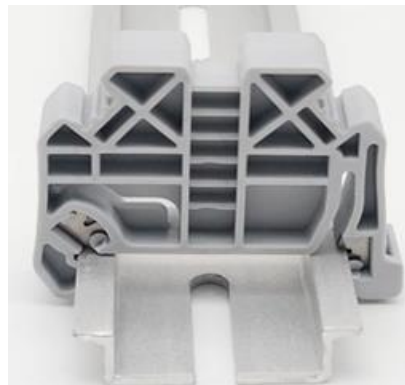
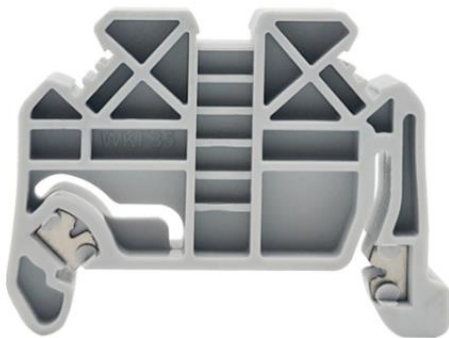
Marker Strip – 10 seats

powered
by 



Item No.	Product dimensions (L x H x W mm)	Suitable for (Item No.)
2898107	52 x 101 x 5	2898084, 2898085, 2898092, 2898112, 2898113, 2898118
2898108	62 x 1.1 x 5	2898086, 2898087, 2898093, 2898114, 2898115, 2898119
2898109	83 x 1.1 x 5	2898088, 2898089, 2898094, 2898116, 2898117, 2898120
2898110	103 x 1.1 x 5	2898090, 2898091, 2898095

End Bracket/Stop



Item No.	Product dimensions (L x H x W mm)
2898111	47 x 34 x 9.5

- Material: Nylon PA66
- Standard: IEC 60947-7-1