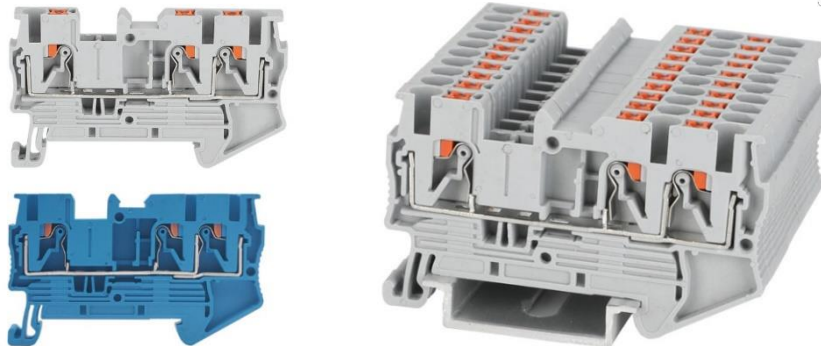



## Data Sheet

### Push-in DIN Rail Terminal Blocks

powered  
by **WKDC**



Item No.	Color	Rated Voltage	Nominal Current	Cross section solid / soft mm <sup>2</sup>	Product dimensions (L x H x W mm)
2898112	Grey	800 V	28 A	02 - 4 / 0.2 - 2.5	60 x 36.5 x 5.2
2898113	Blue	800 V	28 A	02 - 4 / 0.2 - 2.5	60 x 36.5 x 5.2
2898114	Grey	800 V	36 A	0.2 - 6 / 0.2 - 4	66.5 x 36.5 x 6.2
2898115	Blue	800 V	41 A	0.2 - 6 / 0.2 - 4	56 x 36.5 x 6.2
2898116	Grey	1000 V	52 A	0.5 - 10 / 0.5 - 6	75.2 x 43 x 8.2
2898117	Blue	1000 V	52 A	0.5 - 10 / 0.5 - 6	75.2 x 43 x 8.2

- Circuit diagram: 
- Material: Nylon PA66, Tin plated brass conductor
- Flammability rating: V0
- Mounting type: DIN Rail NS 35
- Standard: IEC 60947-7-1

#### English:

Danger - hazardous voltage - will cause electric shock, serious injuries or death. Installation and maintenance work on this product may only be carried out by an authorized electrician. Disconnect the electrical system and the product from the power supply before starting work.

#### German:

Achtung, gefährliche Spannung - kann zu elektrischem Schlag, Verletzungen oder Tod führen. Installations- und Wartungsarbeiten an diesem Produkt dürfen nur durch eine autorisierte Elektrofachkraft durchgeführt werden. Vor Beginn der Arbeiten elektrische Anlage und das Produkt spannungsfrei schalten.

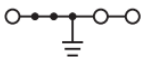
## Data Sheet

### Push-in Ground DIN Rail Terminal Blocks

powered  
by **WKDC**



Item No.	Rated Voltage	Nominal Current	Cross section solid / soft mm <sup>2</sup>	Product dimensions (L x H x W mm)	Suitable for (Item No.)
2898118	1000 V	28 A	02 - 4 / 0.2 - 2.5	60 x 36.5 x 5.2	2898112
					2898113
2898119	800 V	41 A	0.2 - 6 / 0.2 - 4	66.5 x 36.5 x 6.2	2898114
					2898115
2898120	1000 V	52 A	0.5 - 10 / 0.5 - 6	75.2 x 43 x 8.2	2898116
					2898117

- Circuit Diagram: 
- Material: Nylon PA66, Tin plated brass conductor
- Flammability rating: V0
- Mounting type: DIN Rail NS 35
- Standard: IEC 60947-7-1

#### English:

Danger - hazardous voltage - will cause electric shock, serious injuries or death. Installation and maintenance work on this product may only be carried out by an authorized electrician. Disconnect the electrical system and the product from the power supply before starting work.

#### German:

Achtung, gefährliche Spannung - kann zu elektrischem Schlag, Verletzungen oder Tod führen. Installations- und Wartungsarbeiten an diesem Produkt dürfen nur durch eine autorisierte Elektrofachkraft durchgeführt werden. Vor Beginn der Arbeiten elektrische Anlage und das Produkt spannungsfrei schalten.

## Data Sheet

### End Cover

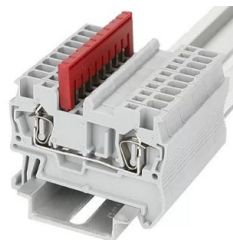


powered  
by **WKDC**

Item No.	Product dimensions (L x H x W mm)	Suitable for (Item No.)
2898121	61 x 29.5 x 2.2	2898112, 2898113, 2898118
2898122	67 x 30 x 2.2	2898114, 2898115, 2898119
2898123	75.2 x 36.3 x 2.2	2898116, 2898117, 2898120

- Material: Nylon PA66

### Plug-in Bridge



Item No.	Product dimensions (L x H x W mm)	Suitable for (Item No.)
2898100	11 x 22.8 x 3.1	2898084, 2898085, 2898112, 2898113
2898101	20.6 x 22.8 x 3.1	2898084, 2898085, 2898112, 2898113
2898102	11 x 22.8 x 3.1	2898086, 2898087, 2898114, 2898115
2898103	23.3 x 22.8 x 3.1	2898086, 2898087, 2898114, 2898115
2898104	14.8 x 30.8 x 3.3	2898088, 2898089, 2898116, 2898117
2898105	31.2 x 30.8 x 3.3	2898088, 2898089, 2898116, 2898117
2898106	18 x 35.1 x 4.2	2898090, 2898091

- Material: Nylon PA66, Nickel plated brass

Item no.: 2898112 - 2898123

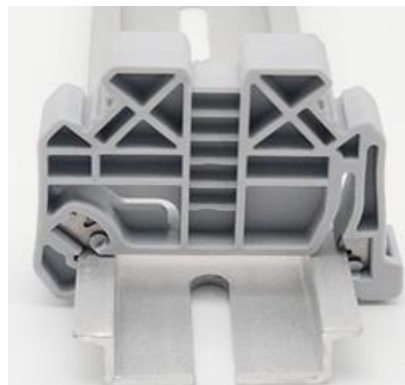
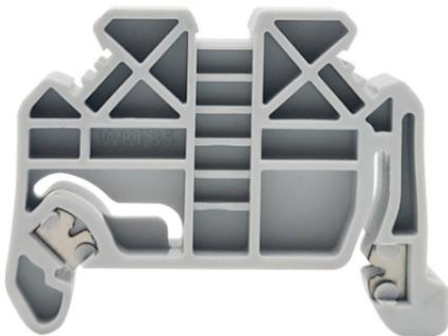
## Data Sheet

Marker Strip – 10 seats



Item No.	Product dimensions (L x H x W mm)	Suitable for (Item No.)
2898107	52 x 101 x 5	2898084, 2898085, 2898092, 2898112, 2898113, 2898118
2898108	62 x 1.1 x 5	2898086, 2898087, 2898093, 2898114, 2898115, 2898119
2898109	83 x 1.1 x 5	2898088, 2898089, 2898094, 2898116, 2898117, 2898120
2898110	103 x 1.1 x 5	2898090, 2898091, 2898095

### End Bracket/Stop



Item No.	Product dimensions (L x H x W mm)
2898111	47 x 34 x 9.5

- Material: Nylon PA66
- Standard: IEC 60947-7-1