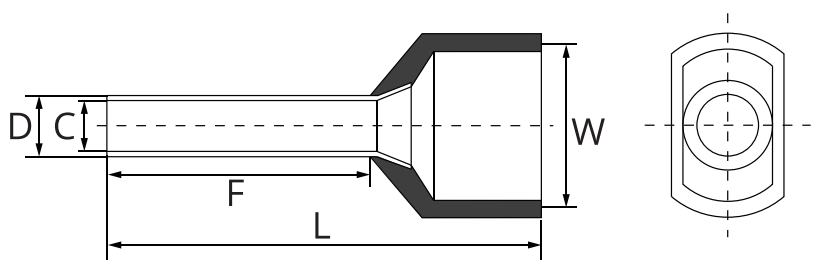


Insulated Cable Ferrules, 200pcs DIN Color Coding (0.75-2.5mm²)



Technical Data:

Color type: DIN
 Terminal material: Copper
 Terminal coating: Tin
 Insulation material: PVC
 Max. voltage rating: 600V
 Max. temperature rating: 75°C

Wire Range		Dimension (mm)					Color	Quantity
AWG	mm ²	F	L	W	C	D		
2 x 20	2 x 0.75	8.0 ±0.2	14.7 ±0.2	5.5 ±0.2	1.8 ±0.2	2.1 ±0.2	Grey	50 pcs
2 x 18	2 x 1.0	8.0 ±0.2	15.1 ±0.2	5.5 ±0.2	2.0 ±0.2	2.3 ±0.2	Red	50 pcs
2 x 16	2 x 1.5	8.0 ±0.2	15.5 ±0.2	6.4 ±0.2	2.3 ±0.2	2.6 ±0.2	Black	50 pcs
2 x 14	2 x 2.5	10.0 ±0.2	18.5 ±0.2	8.0 ±0.2	2.9 ±0.2	3.3 ±0.2	Blue	50 pcs