

AnkerMake

3D Printers by Anker

AnkerMake M5 3D Printer

5X Faster, Extra Intelligent.



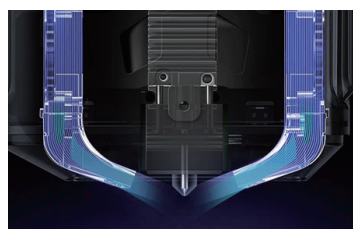
AnkerMake M5 prints 5X faster^[1] with 0.1 mm precision^[2] to get those curves perfectly smooth. With the built-in AI Camera Recognition system, your prints stay on track. And you can print from anywhere^[3] with multiple devices. Stop waiting, and let us help you print smarter and faster at every step.



5X Faster Printing^[1]

PowerBoost™

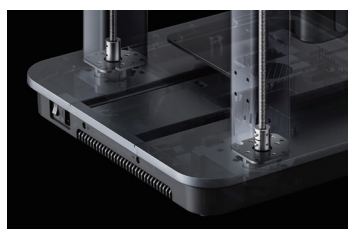
- Powerful Stepper Motor
- Double-Belt Driveshaft
- Stabilized-Motion Algorithm



Precise 0.1 mm Detail^[2]

Ultra-Direct Extruder

- Extrusion: Higher Multi-Stage Gear Ratio
- Melting: Larger Heating Block
- Cooling: More Air Input Volume



Aluminum Alloy Structure

- Integrated Base
- Larger Z-Axis Cross-Section
- Double Z-Axis Leadscrew Motors



Built-In AI Camera Monitoring

- AI Camera Recognition System
- Real-Time Monitoring via App
- XBurst™ CPU



7×7
Auto-Leveling



Auto-Created
Timelapses



Hub Connects
Multiple Devices



Printing Status
Notifications



Easy
Assembly



Print Volume
235×235×250 mm³



Picks Up Prints
After Outages



Save Material
with Instant Alerts

[1] The standard operating speed of AnkerMake is 250 mm/s. Compared to other regular 3D printers working at 50 mm/s as a standard operation speed, AnkerMaker works 5 times faster.

[2] Tests were conducted by AnkerMake in Sep. 2022 using AnkerMake M5 3D Printer at a standard operation speed of 250 mm/s. Test results reflect the approximate performance of AnkerMake M5 3D Printer. The tested model was a standard cube with a volume of 50×50×50 mm³.

[3] The 3D printer needs to be connected with the AnkerMake app. The app only works when all linked devices are connected to the Internet.

Specifications

Printing Parameters		Printing Features	
Print Volume (L×W×H)	235×235×250 mm ³	Extruder	Ultra Direct Extruder
Standard Speed	250 mm/s	Part Cooling	Double Cooling Fan
Acceleration	2,500 mm/s ²	Extruding Gear	Double Hardened Steel
Operation Speed	50-250 mm/s	Heated Plate	PEI Soft Magnetic Steel
Print Precision	±0.1 mm ^[1]	Auto-Leveling	Auto 49 (7×7) Points
Nozzle Diameter	0.4 mm (Compatible with 0.2/0.6/0.8 mm)	Filament Sensor	Broken Material Detection
Filament Diameter	1.75 mm	Resume Printing	Supported
Print Materials	PLA/PETG/TPU/ABS		
Extruder Temperature	Maximum 500°F (260°C)		
Heating Plate Temperature	Maximum 212°F (100°C)		
Electronic		Software	
CPU	Dual XBurst(1.2GHz) + XBurst 0(240MHz)	Slicer Software	AnkerMake Slicer (macOS, Windows), Simplify 3D, Ultimaker Cura, PrusaSlicer
Operation System	Linux	File Input Format	STL, OBJ
EMMC	8 GB	Supported OS	MacOS, Windows
Connection	Wi-Fi (App, AnkerMake Slicer), Type-C USB Flash Drive, OTA Upgrade		
Camera	Detection: AI Recognition Real-Time Monitoring: Up to 720p Timelapse Videos: 1080p Timelapse Videos Frame Rate: 30fps Night Vision: Infrared + LED		
Display	4.3-Inch Touch Screen		
Remote Control	AnkerMake App, AnkerMake Slicer		
Voice Assistant	The Google Assistant, Amazon Alexa (Printing Status Check Only)		
Power	350W		
Power Input	AC 100-240V		
		Body	
		Machine Size	502x438x470 mm (Without Filament Holder)
		Net Weight ^[2]	27.3 lb / 12.4 kg
		Gross Weight ^[3]	32.6 lb / 14.8kg
		<p>[1] Test Model: Cube - 50 x 50 x 50 mm³</p> <p>[2] For products shipped to different countries, the net weight may have a slight difference.</p> <p>[3] For products shipped to different countries, the gross weight may have a slight difference.</p>	

Product Comparison

Product Name	AnkerMake M5	F250	MK3S+
Price	\$799	\$999	\$799 Kit / \$1099 Assembled
Print Volume (L×W×H)	235×235×250 mm ³	230×250×235 mm ³	250×210×210 mm ³
Print Precision	±0.1 mm	±0.1 mm	/
Standard Nozzle Diameter	0.4 mm	0.4 mm	0.4 mm
Filament Diameter	1.75 mm	1.75 mm	1.75 mm
Setup Time	✔ 15 Minutes	/	8 hours (Kit Version)
Standard Speed	✔ 250 mm/s, 2,500 mm/s ²	50 mm/s	80-100 mm/s
Operation Speed	✔ 50-250 mm/s	40-60 mm/s	80-200 mm/s
Heated Plate	✔ PEI Soft Magnetic Steel	PC Plate	PEI Soft Magnetic Steel
Auto-Leveling	✔ Auto 7×7 Points	Auto 3×3 Points	Auto 3×3 Points
Connection	✔ Wi-Fi (App, AnkerMake Slicer), Type-C USB Flash Drive, OTA Upgrade	Wi-Fi, USB Cable, USB Flash Drive	SD Card, USB Cable
AI Recognition Camera	✔ 1080p HD, Real-Time Monitoring, Timelapse Videos, Frame Rate: 30 fps	N	N
Remote Control	✔ AnkerMake App, AnkerMake Slicer, Google Assistant, Amazon Alexa	N	N