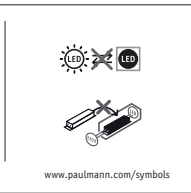
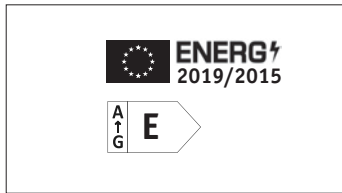




Paulmann



Paulmann Licht GmbH
Quezinger Feld 2
31832 Springe
Germany
 www.paulmann.com

Art.-Nr.: 921.27

PEO 10/23

CE UK CA

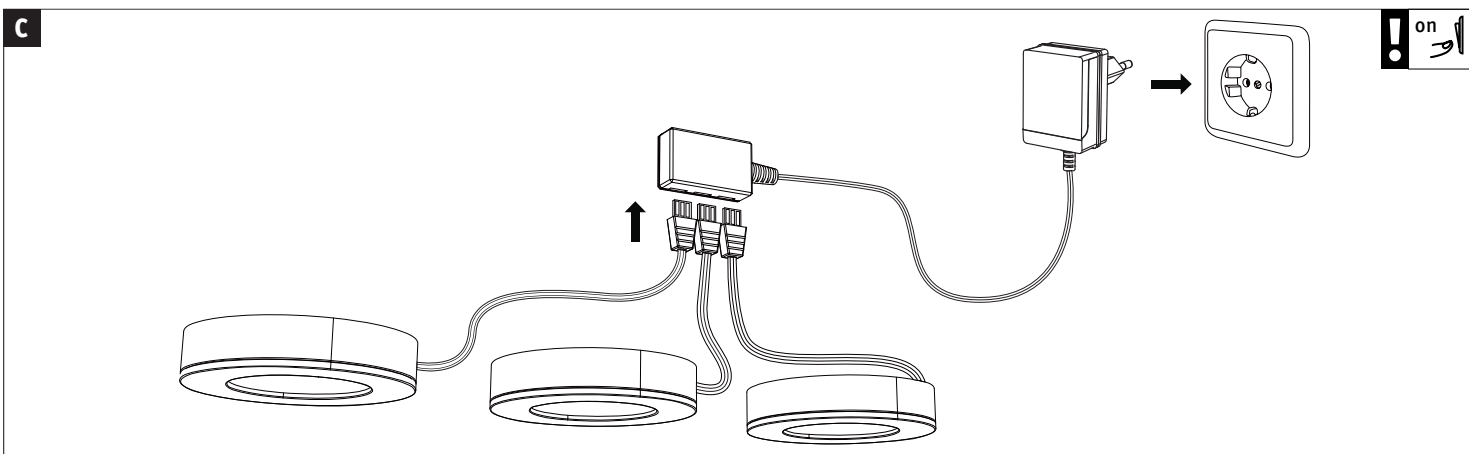
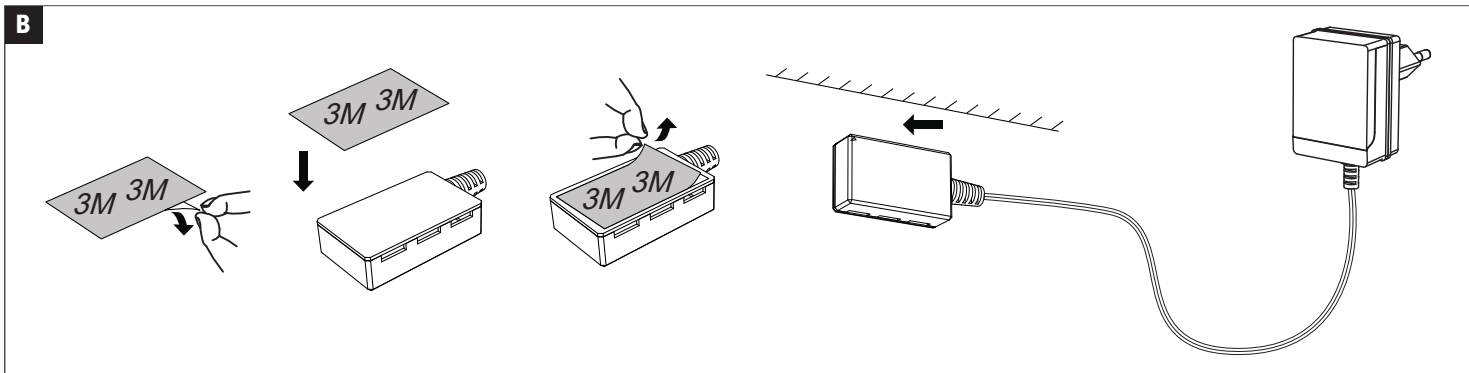
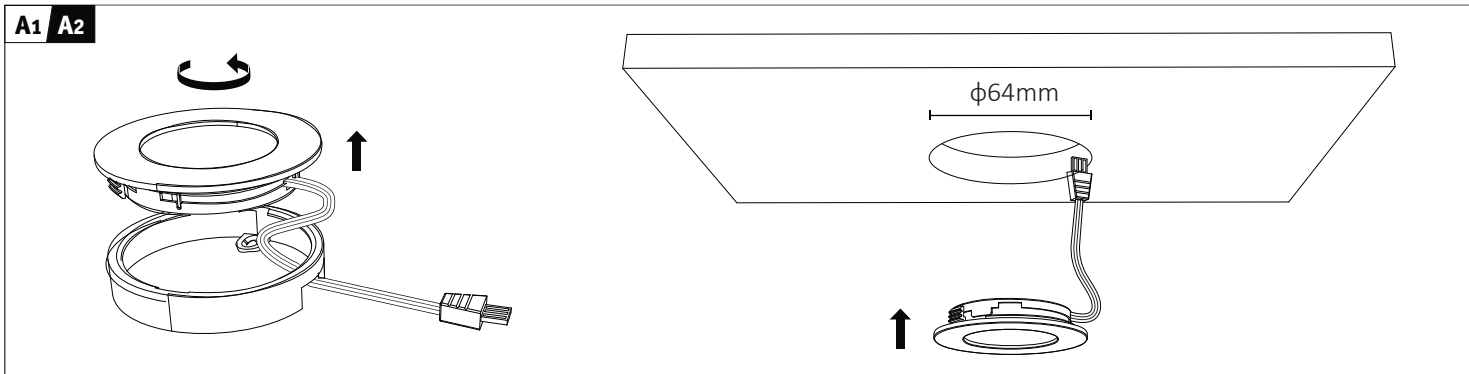
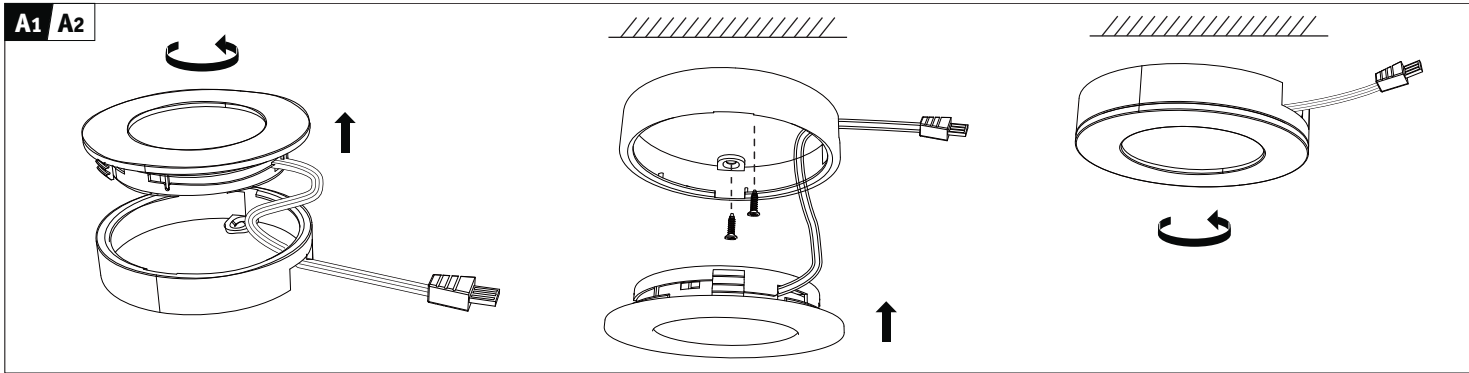
500mm 1x

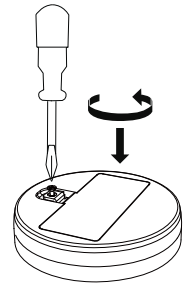
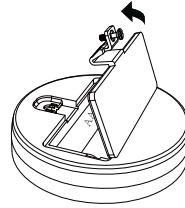
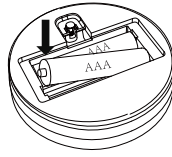
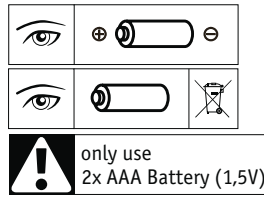
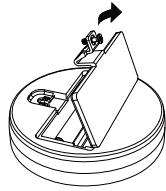
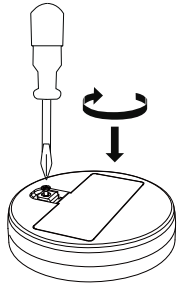
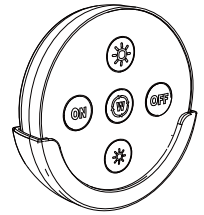
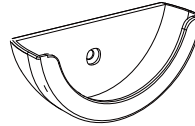
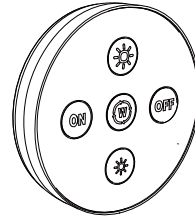
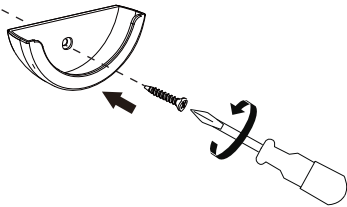
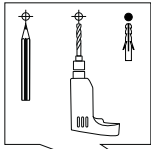
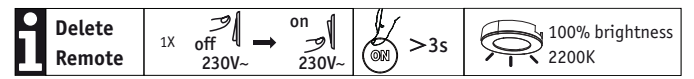
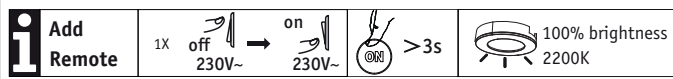
1500mm 2x

1x

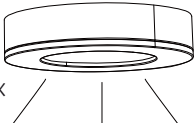
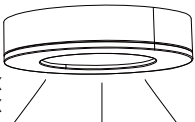
1x 1x 1x 6x

ø63mm

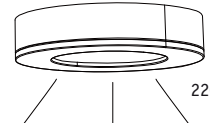
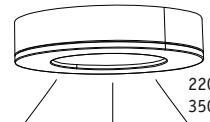
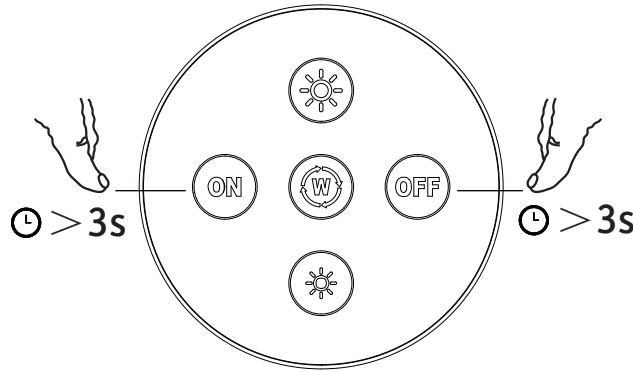


D**E****F**

2200K or 2700K
3500K or 4000K

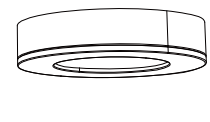
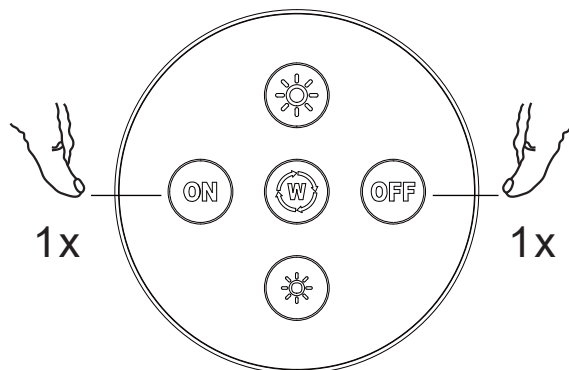
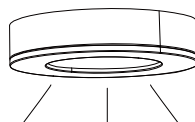


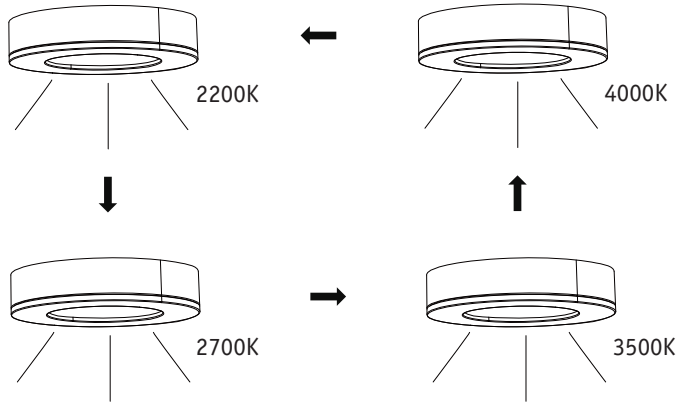
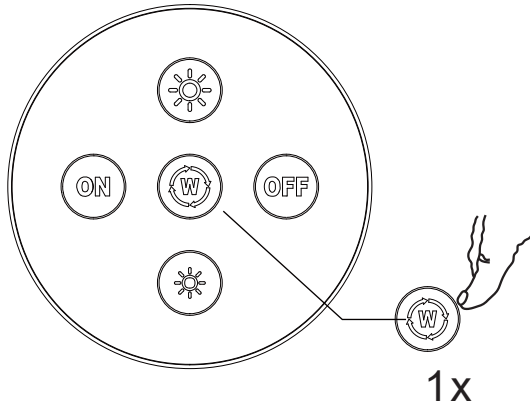
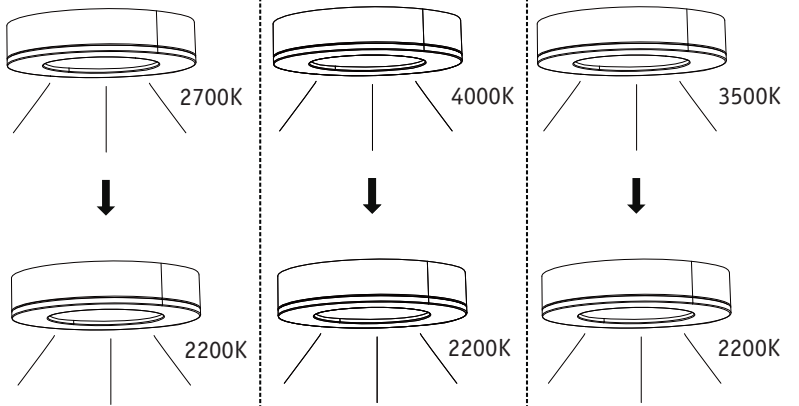
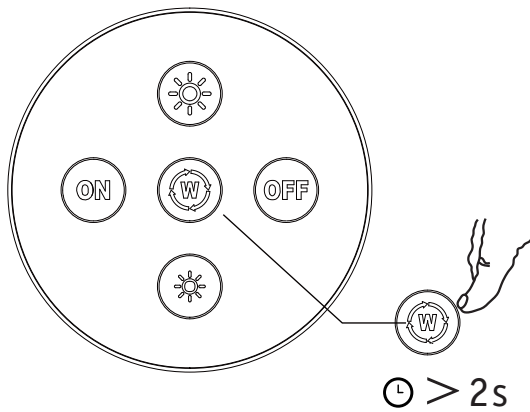
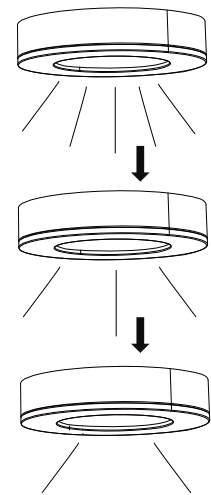
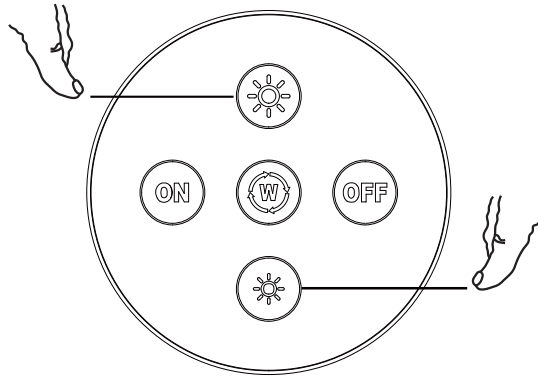
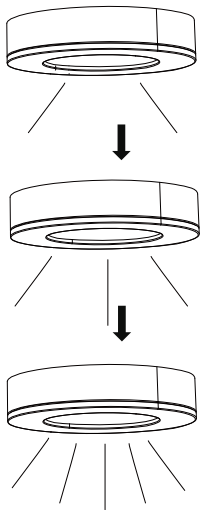
2200K



2200K

2200K or 2700K
3500K or 4000K

G

H**I****J**

Zugelassen für den Betrieb in allen Ländern der EU / Approved for operating in all European countries
 CE: Konform mit / in accordance with / conformément a 2014/53/EU <http://www.paulmann.com/ce>

2,4 GHz –
 2,4835 GHz



Doesn't apply for the geographical area within a radius of 20km from the centre on "Ny Alesund"

Hiermit erklärt Paulmann Licht, dass der Funkanlagentyp [921.27] der Richtlinie 2014/53/EU entspricht.
 Der vollständige Text der EU-Konformitätserklärung ist unter der folgenden Internetadresse verfügbar: www.paulmann.com/ce
 Funk-Frequenz [2,4 GHz ~ 2,4835 GHz] Abgestrahlte Energie [10 mW]

