



h2grandprix.com

QUICK GUIDE
**H2GP
SPRINT
CAR**

RESK-03-1

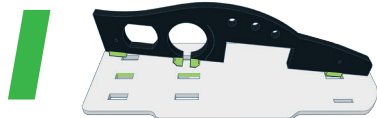
SCAN THIS CODE RIGHT NOW
TO ACCESS FREE CURRICULUM
SAMPLES, 3D PRINTABLES,
TIPS AND TRICKS,
AND ACCESS TO THE SPRINT
VIRTUAL COMPETITION

h2grandprix.com



HOW TO ASSEMBLE THE CAR

The process of putting together the kit is easy to understand and can be completed quickly. The H2GP Sprint chassis is made from durable Plexiglas, however improper use can lead to parts breaking. Take your time and practice putting the chassis together, taking it apart and putting it back together again.



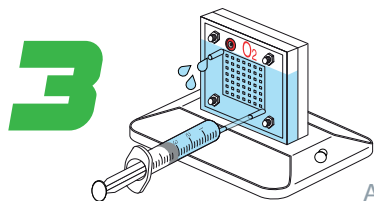
NEVER USE EXCESSIVE FORCE!

The chassis parts have a “lock-like” connection that holds the part to the base plate. Always place one “leg” of the “lock-like” connection and gently push in the other side.



HOW TO PRODUCE HYDROGEN

Using a syringe, inject distilled or purified water into the bottom nozzle of the electrolyzer on the oxygen (red) side.



USE DISTILLED WATER ONLY!

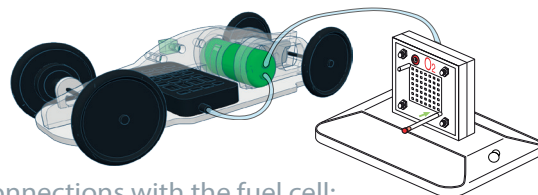
As soon as the water flows out of top nozzle (oxygen side), disconnect the syringe.

TIP!

By switching spur gears and different wheels you can achieve optimal gear ratio.

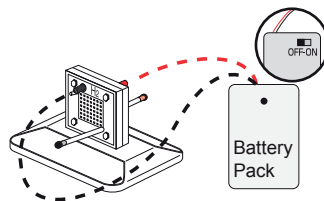
Have fun experimenting!

4



Finish all connections with the fuel cell:

- A** Bottom nozzles (on both sides) ▶ red/black pins
- B** Top nozzle (on the hydrogen side) ▶ gas tank
- C** Top Nozzle (on the oxygen side ▶ left open



ENSURE TO RESPECT THE POLARITY.

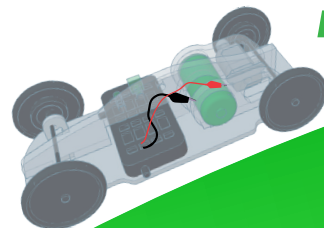
Connect the battery pack to the electrolyzer and turn it on. Ensure to respect the polarity shown by the color code. You will see the inner gas tank fill with hydrogen gas.

HOW TO RUN THE CAR

5

Firstly, make sure your hydrogen tank is fully filled and connected to the fuel cell.

Connect the fuel cell to the motor using alligator clips.



ALWAYS WORK IN PAIRS!

The car will start moving immediately once connected, be aware of this and make sure you have someone on the other side to catch the car. To stop the car, disconnect one alligator clip from the motor.