



## 19" Power Distribution Unit 9 x German Socket

Art no.: PDU9C02

### Technical Features

19" PDU with ON/OFF switch

Voltage: 250VAC, 50/60Hz, 16A, Max. 3500W

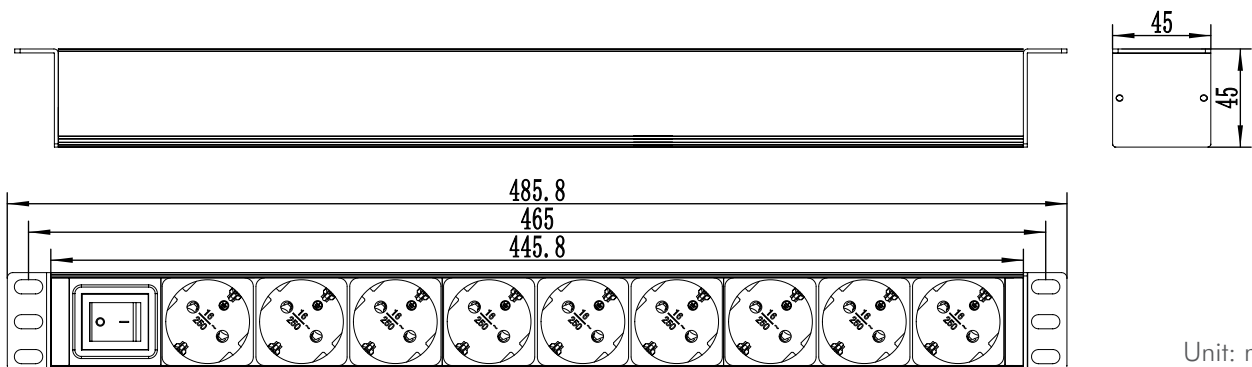
Sockets: 9 x German type (DIN 49440, VDE0620-1 compliant)

2m power cord H05VV-F 3x1.5mm<sup>2</sup> with CEE7/7 plug

Aluminum alloy shell, 1U

Color: RAL 9005 Black

### Technical Drawings



PDU9C02



4 052792 043754

Made in China

[www.logilink.com](http://www.logilink.com)



RoHS  
compliant



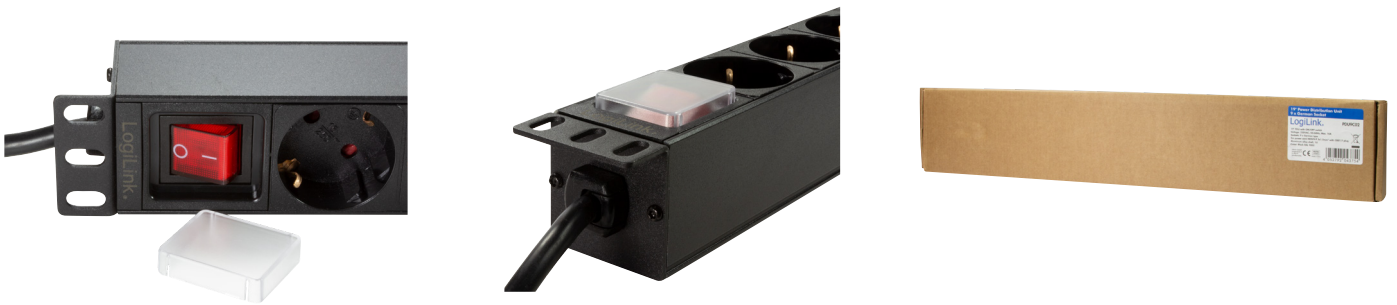
\* The specifications and pictures are subject to change without notice.  
\*All trade names referenced are the registered trademark of their respective owners.

## Package Content

1 x 19" Power Distribution Unit 9 x German Sockets

## Packaging Information

Packing Dimension	510 x 145 x 70mm
Packing Weight	1kg
Carton Dimension	515 x 295 x 195mm
Carton Q'ty	10pcs
Carton Weight	11kg



PDU9C02



4 052792 043754

Made in China

[www.logilink.com](http://www.logilink.com)



RoHS  
compliant



\* The specifications and pictures are subject to change without notice.  
\*All trade names referenced are the registered trademark of their respective owners.