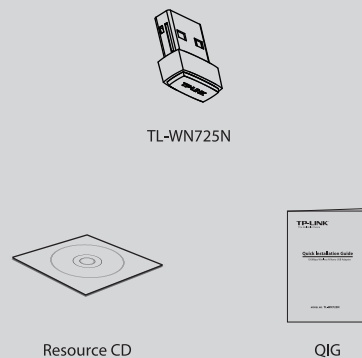


Quick Installation Guide

150Mbps Wireless N Nano USB Adapter

MODEL NO. TL-WN725N

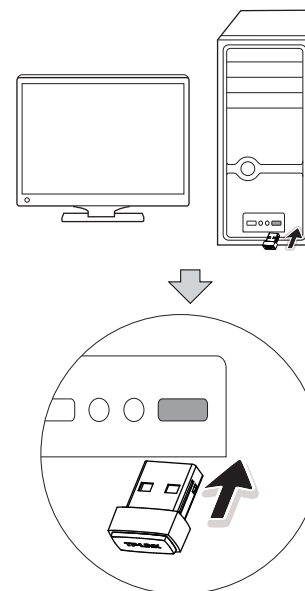
Package Contents



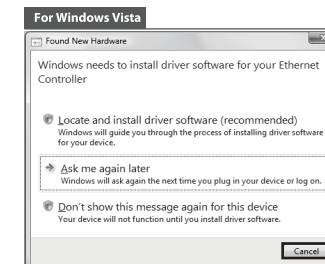
System Requirement

· Windows 7 · Windows Vista · Windows XP

1 Hardware Connection



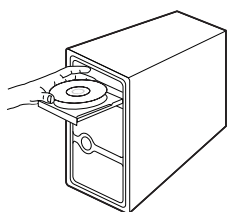
You may see the **Found New Hardware Wizard** after the adapter has been inserted. Please click 'Cancel'.



2 Software Installation

(The installation procedures in Windows 7/ Vista/ XP are similar. Here takes the procedures in Windows 7 for example.)

- 1 Insert the TP-LINK Resource CD into the CD-ROM drive.

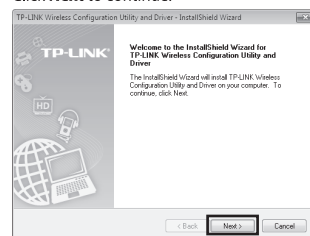


- 2 Find the model TL-WN725N, click it, and then select **Install Driver&Utility**.

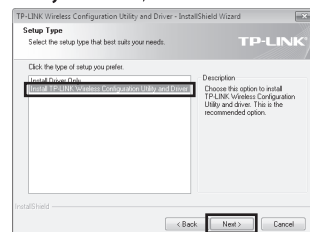


You will be prompted to choose the setup language from a drop-down list of 14 languages; then click **OK** to proceed. As follows we take English setup for example.

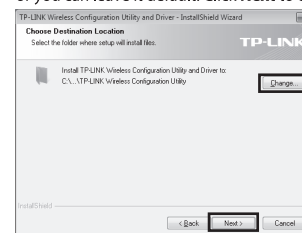
- 3 The **InstallShield Wizard** window will appear. Click **Next** to continue.



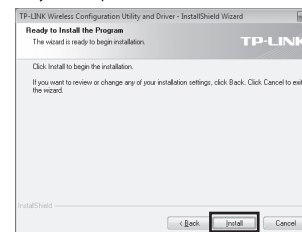
- 4 Select **Install TP-LINK Wireless Configuration Utility and Driver**, and then click **Next**.



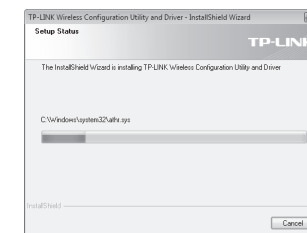
- 5 Click **Change...** to specify the destination location or you can leave it default. Click **Next** to continue.



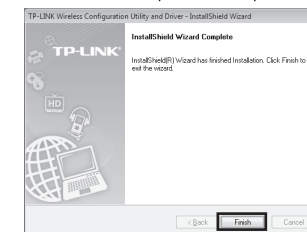
- 6 Click **Install** to install the driver and utility for your adapter.



- 7 The installation process may take 1~2 minutes.



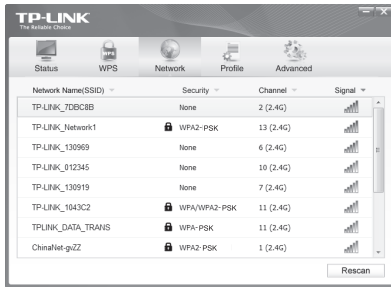
- 8 The following screen will then appear. Click **Finish** to complete the setup.




3 Connect to Network

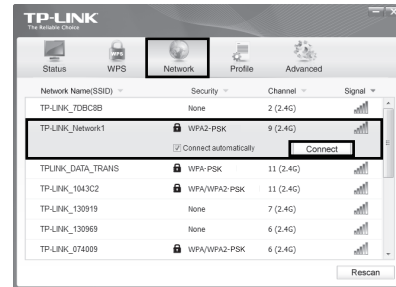
(You can skip to **Appendix: Connect to Wireless Router by WPS** to quickly connect to a network if your Router or Access Point features WPS or QSS function.)

- 1 After installation, the configuration page will pop up on your desktop.



Note The icon  will appear on your desktop. Double-clicking on the icon can start the utility.

- 2 Click **Network** in the tools section to display a list of available wireless networks. Highlight the target network name (e.g. TP-LINK_Network1) and then click **Connect** to build a connection.



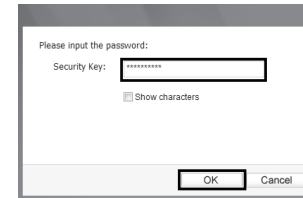
Note Here we only choose a wireless network with the security type of **WPA/WPA2-PSK** as an example to elaborate the following steps.

If you want to know more about the connection to a wireless network with the security type of **WPA/WPA2**, please refer to the User Guide on the resource CD included.

- 3 If the network is unsecured, you will directly connect to it. If it is secured (with WPA/WPA2-PSK), there are two ways to connect to it.

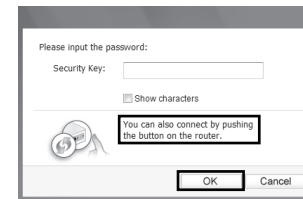
Method One:

Input the wireless password into the **Security Key** field and then click **OK** to continue.

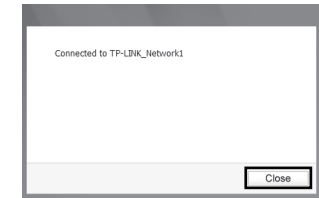


Method Two:

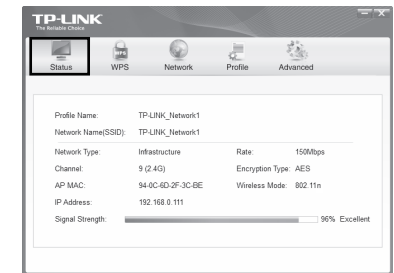
Without entering a key, push the WPS or QSS button on your Router as hinted "You can also connect by pushing the button on the router". Then click **OK** to continue.



- 4 The following screen indicates successful connectivity. Click **Close** to enjoy the Internet.



- 5 To view more information about the network connected, click **Status** in the tools section.

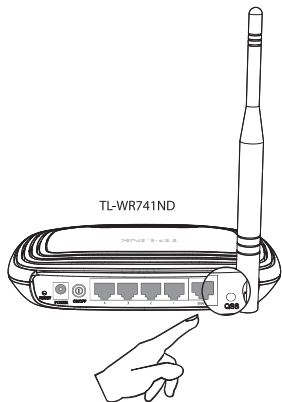


Appendix: Connect to Wireless Router by WPS

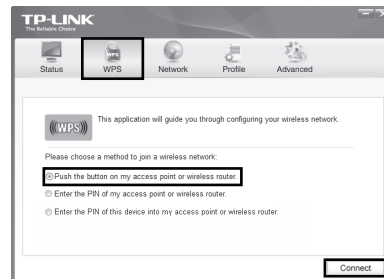
If your wireless Router features the WPS or QSS function, you can also set up a wireless connection in this way.

Note For more configuration methods of WPS, please refer to the User Guide on the Resource CD.

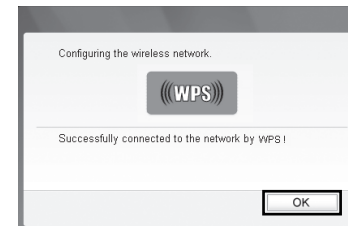
- 1 Push the **WPS** or **QSS** button on the Router. (Here takes Router TL-WR741ND for example.)



- 2 Launch the configuration utility and click **WPS** in the tools section. Select **Push the button on my access point or wireless router** and then click **Connect**.



- 3 Wait for the connection process to complete. The following screen indicates successful connectivity. Click **OK** to finish the WPS connection.



Technical Support

- For more troubleshooting help, go to www.tp-link.com/support/faq.asp
- To download the latest Firmware, Driver, Utility and User Guide, go to www.tp-link.com/support/download.asp
- For all other technical support, please contact us by using the following details:

Global	Australia & New Zealand
Tel: +86 755 26504400 E-mail: support@tp-link.com Service time: 24hrs, 7 days a week	Tel: AU 1300 87 5465 NZ 0800 87 5465 E-mail: support@tp-link.com.au Service time: 24hrs, 7 days a week
Singapore	Turkey
Tel: +65 62840493 E-mail: support.sg@tp-link.com Service time: 24hrs, 7 days a week	Tel: 444 19 25 (Turkish Service) NZ 0800 87 5465 E-mail: support.tr@tp-link.com Service time: 9:00 AM to 6:00 PM, 7 days a week
UK	Italy
Tel: +44 (0) 845 147 0017 E-mail: support.uk@tp-link.com Service time: 24hrs, 7 days a week	Tel: +39 02 66987799 E-mail: support.it@tp-link.com Service time: Monday to Friday, 9:00 AM to 6:00 PM
USA/Canada	Ukraine
Toll Free: +1 866 225 8139 E-mail: support.usa@tp-link.com Service time: 24hrs, 7 days a week	Tel: +380 (44) 590-51-14 E-mail: support.ua@tp-link.com Service time: Monday to Friday 14:00 PM to 22:00 PM
Malaysia	Brazil
Tel: 1300 88 875465 (1300 88TPLINK) E-mail: support.my@tp-link.com Service time: 24hrs, 7 days a week	Toll Free: 0800-770-4337 (Portuguese Service) E-mail: suporte.br@tp-link.com Service time: Monday to Saturday 08:00 AM to 08:00 PM
Russian Federation	Poland
Tel: 8 (499) 754-55-60 8 (800) 250-55-60 (toll-free call from any RF region) E-mail: support.rus@tp-link.com Service time: From 10:00 to 18:00 (Moscow time) *Except weekends and holidays in Russian Federation	Tel: +48 (0) 801 080 618 / +48 22 7217563 (if calls from mobile phone) E-mail: support.pl@tp-link.com Service time: Monday to Friday 9:00 AM to 5:00 PM, GMT+1 or GMT+2 (Daylight Saving Time)
Indonesia	Germany / Austria
Tel: +62 (021) 6259 135 E-mail: support.id@tp-link.com Service time: Monday to Friday 9:00 AM to 6:00 PM, GMT+1 or GMT+2 (Daylight Saving Time) *Except public holidays	Tel: +49 1805 875465 (German Service) E-mail: support.de@tp-link.com Fee: 0.14 EUR/min from the German fixed phone network and up to 0.42EUR/min from mobile phone. Service Time: Monday to Friday, 9:00 AM to 6:00 PM, GMT+1 or GMT+2 (Daylight Saving Time in Germany) * Except bank holidays in Hesse
Switzerland	
Tel: +41 (0)848 800998 (German Service) E-mail: support.ch@tp-link.com Fee: 4-8 Rp/min, depending on rate of different time Service time: Monday to Friday 9:00 AM to 6:00 PM, GMT+1 or GMT+2 (Daylight Saving Time)	