

Set of link rails for reversing contactor assemblies  
3RT1.6 , infeed side, phase swapping



## General technical data

<b>Product brand name</b>		SIRIUS
<b>Product designation</b>		Set of cables
<b>Design of the product</b>		Reversing contactor assembly, top (phase reversal), size S10
<b>Size of contactor</b>		S10

## Certificates/approvals

General Product Approval

Declaration of Conformity

Shipping Approval



[Miscellaneous](#)



other

[Confirmation](#)

#### Further information

**Information- and Downloadcenter (Catalogs, Brochures,...)**

<http://www.siemens.com/industrial-controls/catalogs>

**Industry Mall (Online ordering system)**

<https://mall.industry.siemens.com/mall/en/en/Catalog/product?mlfb=3RA1963-3D>

**Cax online generator**

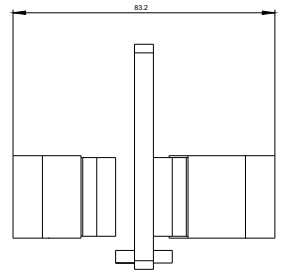
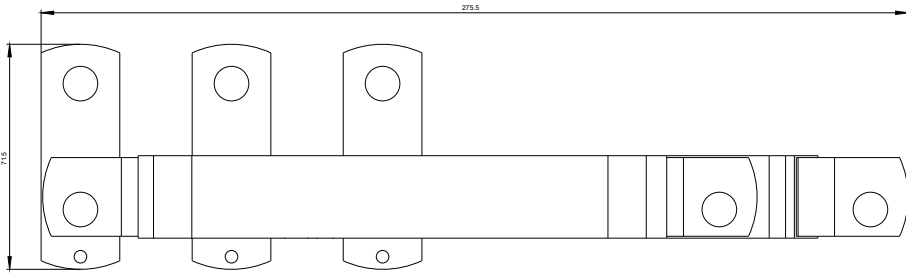
<http://support.automation.siemens.com/WW/CAXorder/default.aspx?lang=en&mlfb=3RA1963-3D>

**Service&Support (Manuals, Certificates, Characteristics, FAQs,...)**

<https://support.industry.siemens.com/cs/ww/en/ps/3RA1963-3D>

**Image database (product images, 2D dimension drawings, 3D models, device circuit diagrams, EPLAN macros, ...)**

[http://www.automation.siemens.com/bilddb/cax\\_de.aspx?mlfb=3RA1963-3D&lang=en](http://www.automation.siemens.com/bilddb/cax_de.aspx?mlfb=3RA1963-3D&lang=en)



last modified:

07/19/2019