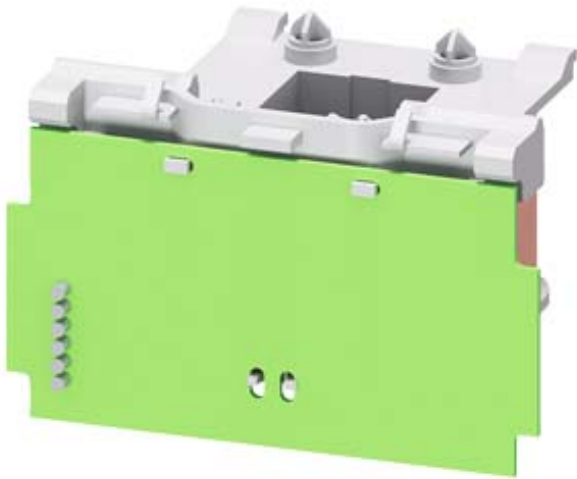


Magnet coil for contactors S2, 175 ... 280 V AC / DC, with varistor



General technical data	
Product brand name	SIRIUS
Product designation	Magnet coil
Control circuit	
Type of voltage of the control supply voltage	AC/DC
Control supply voltage frequency	
<ul style="list-style-type: none"> <li>• 1 rated value</li> <li>• 2 rated value</li> </ul>	<ul style="list-style-type: none"> <li>50 Hz</li> <li>60 Hz</li> </ul>
Control supply voltage	
<ul style="list-style-type: none"> <li>• 1 at AC                             <ul style="list-style-type: none"> <li>— at 50 Hz rated value</li> <li>— at 60 Hz rated value</li> </ul> </li> <li>• 2 at AC                             <ul style="list-style-type: none"> <li>— at 50 Hz rated value</li> <li>— at 60 Hz rated value</li> </ul> </li> </ul>	<ul style="list-style-type: none"> <li>175 V</li> <li>175 V</li> <li>280 V</li> <li>280 V</li> </ul>
Control supply voltage	
<ul style="list-style-type: none"> <li>• 1 at DC rated value</li> <li>• 2 at DC rated value</li> </ul>	<ul style="list-style-type: none"> <li>175 V</li> <li>280 V</li> </ul>

Operating range factor control supply voltage rated value of magnet coil at AC

- at 50 Hz
- at 60 Hz

0.8 ... 1.1

0.8 ... 1.1

## Certificates/approvals

General Product Approval	EMC	Declaration of Conformity	Shipping Approval
--------------------------	-----	---------------------------	-------------------



[Miscellaneous](#)



## other

[Confirmation](#)

## Further information

**Information- and Downloadcenter (Catalogs, Brochures,...)**

<http://www.siemens.com/industrial-controls/catalogs>

**Industry Mall (Online ordering system)**

<https://mall.industry.siemens.com/mall/en/en/Catalog/product?mlfb=3RT2934-5NP31>

**Cax online generator**

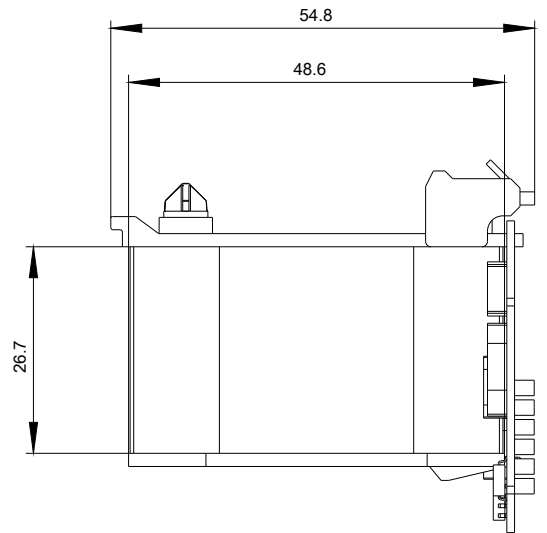
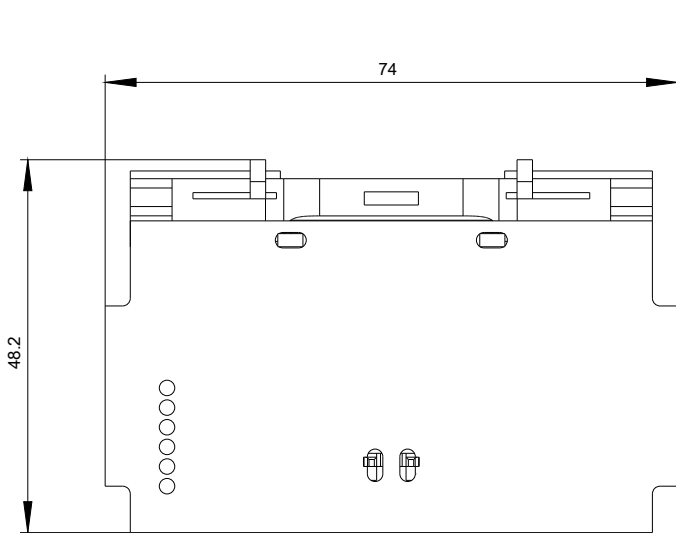
<http://support.automation.siemens.com/WW/CAXorder/default.aspx?lang=en&mlfb=3RT2934-5NP31>

**Service&Support (Manuals, Certificates, Characteristics, FAQs,...)**

<https://support.industry.siemens.com/cs/ww/en/ps/3RT2934-5NP31>

**Image database (product images, 2D dimension drawings, 3D models, device circuit diagrams, EPLAN macros, ...)**

[http://www.automation.siemens.com/bilddb/cax\\_de.aspx?mlfb=3RT2934-5NP31&lang=en](http://www.automation.siemens.com/bilddb/cax_de.aspx?mlfb=3RT2934-5NP31&lang=en)



last modified:

09/11/2019