






为转动组合 3RT1.5 扭转组合 3RT1.6，馈电侧，相位交换



综合技术数据

产品品牌名称		SIRIUS
产品名称		线束
产品的规格		向上转向组合（换相），尺寸 S10
接触器的结构尺寸		S10

正树/批准：

General Product Approval	Declaration of Conformity	Shipping Approval
 <p>UL</p>	 <p>EAC</p>	 <p>EG-Konf.</p>
	<p><a href="#">Miscellaneous</a></p>	 <p>ABS</p>
		 <p>RINA</p>

other

[Confirmation](#)

## 更多信息

**Information- and Downloadcenter (产品目录, 产品介绍册, ...)**

<http://www.siemens.com/industrial-controls/catalogs>

**Industry Mall (网上订购系统)**

<https://mall.industry.siemens.com/mall/zh/zh/Catalog/product?mlfb=3RA1963-3D>

**Cax 在线发生器**

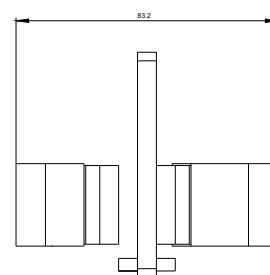
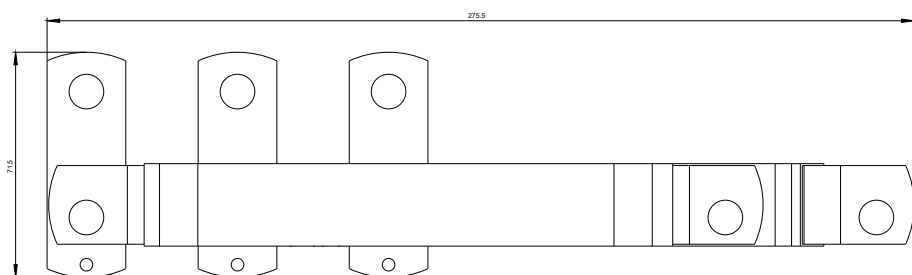
<http://support.automation.siemens.com/WW/CAXorder/default.aspx?lang=en&mlfb=3RA1963-3D>

**Service&Support (用户手册, 操作说明书, 认证证书, 特性曲线, 常见问题,...)**

<https://support.industry.siemens.com/cs/ww/zh/ps/3RA1963-3D>

**图片数据库 (产品照片, 2D比例图, 3D模型, 设备电路图, EPLAN Makros, ...)**

[http://www.automation.siemens.com/bilddb/cax\\_de.aspx?mlfb=3RA1963-3D&lang=en](http://www.automation.siemens.com/bilddb/cax_de.aspx?mlfb=3RA1963-3D&lang=en)



上一次修改：

2019/9/17